



# PARTS LIST

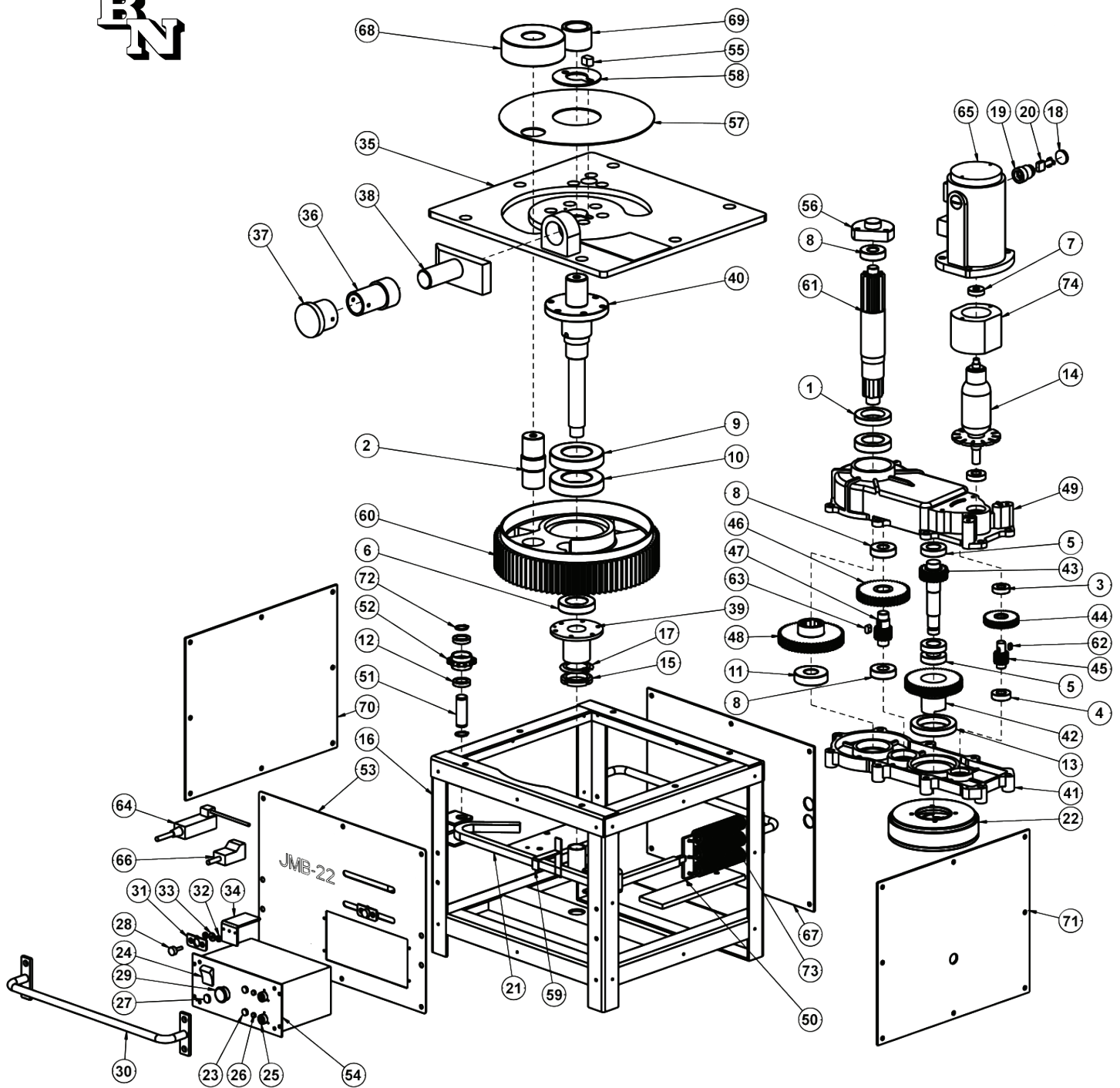
## JMB-22 Rebar Bender



Includes a stand, two independent foot switches,  
and a kit of five rollers

BN Products-USA • 3450 Sabin Brown Road • Wickenburg, AZ 85390  
(800) 992-3833 • mail@bnproducts.com • www.bnproducts.com

# JMB-22 Exploded View





## JMB-22 Parts List Information

No.	Part No.	Qty	Description
1	JMBP-00089	1	Oil Seal (JMB-22)
2	JMBP-00090	1	Moving Roller Shaft (JMB-22)
3	JMBP-00002	1	6002ZZ Bearing
4	JMBP-00003	2	6003ZZ Bearing
5	JMBP-00004	3	6005ZZ Bearing
6	JMBP-00005	2	6008ZZ Bearing
7	JMBP-00091	1	6200DD Bearing
8	JMBP-00009	3	6204ZZ Bearing
9	JMBP-00092	1	6211DD Bearing
10	JMBP-00093	1	6211ZZ Bearing
11	JMBP-00010	1	6305ZZ Bearing
12	JMBP-00011	4	6804ZZ Bearing
13	JMBP-00012	1	6912ZZ Bearing
14	JMBP-00094	1	Armature (JMB-22) (120V)
15	JMBP-00095	1	AN08 Lock Nut
16	JMBP-00096	1	Frame Body (JMB-22)
17	JMBP-00097	1	AN08 Washer
18	JMBP-00098	2	Carbon Cap (JMB-22)
19	JMBP-00099	2	Carbon Holder (JMB-22)
20	JMBP-00100	2	Carbon Brush (JMB-22)
21	JMBP-00101	1	Chain (JMB-22)
22	JMBP-00102	1	Clutch Assy. (JMB-22)
23	JMBP-00026	2	Start Button
24	JMBP-00022	1	On/Off Switch
25	JMBP-00024	2	Foot S/W Connector
26	JMBP-00103	2	Led Light
27	JMBP-00025	1	Fuse
28	JMBP-00104	2	Degree Knob
29	JMBP-00023	1	Emergency Switch
30	JMBP-00105	2	Handle (Jmb-22)
31	JMBP-00106	2	Degree Indicator
32	JMBP-00107	4	Degree Indicator Washer
33	JMBP-00108	2	Degree Indicator Washer
34	JMBP-00109	2	Degree Indicator Bracket
35	JMBP-00110	1	Top Plate (JMB-22)
36	JMBP-00111	1	Adjustable Nut
37	JMBP-00112	1	Modulator Handle
38	JMBP-00031	1	Bar Stopper
39	JMBP-00113	1	Bearing Housing
40	JMBP-00114	1	Center Shaft (JMB-22)

No.	Part No.	Qty	Description
41	JMBP-00115	1	Gear Box Bottom Housing (JMB-22)
42	JMBP-00033	1	7th Gear (Clutch Gear)
43	JMBP-00034	1	6th Gear (Clutch Shaft Gear)
44	JMBP-00035	1	9th Gear (69phi Gear)
45	JMBP-00036	1	8th Gear (28phi Gear)
46	JMBP-00037	1	5th Gear (98phi Gear)
47	JMBP-00038	1	4th Gear (34phi Gear)
48	JMBP-00039	1	3rd Gear (123 Phi Gear)
49	JMBP-00041	1	Gear Box Top Housing
50	JMBP-00043	1	Spring Holder
51	JMBP-00044	1	Shaft For Chain Gear
52	JMBP-00045	1	Chain Sprocket
53	JMBP-00116	1	Front Pannel
54	JMBP-00117	1	Control Box Assembly
55	JMBP-00054	1	Roller Stoper
56	JMBP-00118	1	Bearing Housing
57	JMBP-00119	1	Top Dust Cover
58	JMBP-00120	1	Top Dust Cover
59	JMBP-00055	1	Sensor Detector
60	JMBP-00048	1	Large Gear (1st Gear)
61	JMBP-00058	1	2nd Gear (Center Shaft Gear)
62	JMBP-00059	1	Key 6*15*2r
63	JMBP-00060	1	Key 8*15*2r
64	JMBP-00061	1	Limit Switch
65	JMBP-00121	1	Motor Housing (JMB-22)
66	JMBP-00064	2	Angle Sensor
67	JMBP-00122	1	Rear Cover
68	JMBP-00085	1	Roller #5 (22) 150mm
68-2	JMBP-00082	1	Roller #2 (22) 79mm
68-3	JMBP-00083	1	Roller #3 (22) 96mm
68-4	JMBP-00084	1	Roller #4 (22) 120mm
69	JMBP-00081	1	Roller #1 (22) 55mm
70	JMBP-00123	1	Left Cover (JMB-22)
71	JMBP-00124	1	Right Cover (JMB-22)
72	JMBP-00125	4	Snap Ring
73	JMBP-00126	3	Tension Spring (JMB-22)
74	JMBP-00127	1	Stator (Jmb-22)
	JMBP-00088	2	Foot Switch
	BCS-JMB-22	1	Stand





### BN REBAR BENDER

#### Heavy-duty portable table-type rebar bender

- Largest 115V portable rebar bender available
- Easily bends 1-1/8" grade 60 rebar 180° in just seconds
- For small to medium size production shops

**Includes:** Hands free foot pedal and a complete set of roller dies



Product No.	Description
DBD-32X	Portable #9 Rebar Bender

### THE CUTTING EDGE SAW™

#### 3/4" Rebar and 7/8" All-thread rod capacity, 9 amps

- 3-position removable side handle and a rotating trigger handle
- Double insulated power harness
- ETL Certified and Listed

Includes: 2 TCT cutting blades, extra set of motor carbon brushes, removable side handle, chip collector attachment, tool kit, and operations manual with a plastic molded carrying case.



Product No.	Description
BNCE-20	Cutting Edge Saw™

### THE CORDLESS CUTTING EDGE SAW™

#### 3/4" rebar and 7/8" all-thread rod capacity, 24V Li-Ion battery

- Features a three position handle
- Comes with two (2) 24V batteries plus a quick-time AC charger unit
- We also include two specially designed cutting blades plus a chip collector bag and nifty carrying case



Product No.	Description
BNCE-20-24V	Cordless Cutting Edge Saw™

### THE TIGER TIER™ REBAR TYING MACHINE

#### New generation Rebar Tier

- Can tie two #6 (3/4") rebars in seconds
- Comes with two 18V Li-Ion power packs and a quick-time AC charger unit
- Light weight (5.8 lbs) with a glove-friendly grip and a one-year warranty
- Comes with a Nifty case that also contains four spools of wire ready to go



Product No.	Description
BNT-40X	Portable Rebar Tying Tool

### PORTABLE #5 HYDRAULIC REBAR CUTTER

#### Easy to handle in-field portable rebar cutter.

- Maximum cutting diameter is 5/8" rebar
- Cutting speed is less than 2.5 seconds with cutting pressure of 15 tons
- This is a hydraulic cutting shear
- The tool also has a safety relief valve and a cutting guard as standard feature



Product No.	Description
DC-16W	Portable #5 Rebar Cutter

### PORTABLE #6 HYDRAULIC REBAR CUTTER

#### Largest selling in-field rebar cutter in the USA

- Maximum cutting diameter is 3/4" rebar
- Cutting speed is less than 3 seconds with cutting pressure of 15 tons
- This is a hydraulic cutting shear
- The tool also has a safety relief valve and a cutting guard as standard features



Product No.	Description
DC-20WH	Portable #6 Rebar Cutter

### PORTABLE #8 HYDRAULIC REBAR CUTTER

#### One of our best selling in-field rebar cutters

- Maximum cutting diameter is 1" rebar
- Cutting speed is less than 5 seconds with cutting pressure of 30 tons
- This is a electric/hydraulic cutting shear
- The tool also has a safety relief valve and a cutting guard as standard features

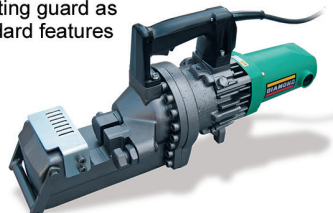


Product No.	Description
DC-25X	Portable #8 Rebar Cutter

### PORTABLE #10 HYDRAULIC REBAR CUTTER

#### Largest capacity in-field portable rebar cutter.

- Maximum cutting diameter is 1-1/4" rebar
- Cutting speed is less than 7 seconds with cutting pressure of 45 tons
- This is a hydraulic cutting shear
- The tool also has a safety relief valve and a cutting guard as standard features



Product No.	Description
DC-32WH	Portable #10 Rebar Cutter

### PORTABLE #5 HYDRAULIC REBAR BENDER

#### Largest capacity in-field portable rebar cutter.

- Maximum bending diameter is 5/8" rebar
- Bending angle is 0 to 180°
- This is a electric/hydraulic bending tool
- Comes with a carrying case, additional hydraulic oil, tool kit and manual



Product No.	Description
HB-16W	Portable #5 Rebar Bender