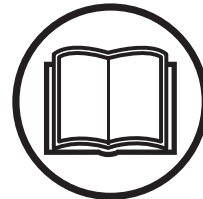




GB Operator's manual
US (EN) Operator's manual
CA (FR) Manuel d'utilisation
US (ES) Manual de instrucciones
JP 取扱説明書
CN 操作手册
KO 사용자 설명서

WT 15



PRESENTATION

Dear Customer,

Thank you for choosing a Husqvarna product!

It is our wish that you will be satisfied with your product and that it will be your companion for a long time. A purchase of one of our products gives you access to professional help with repairs and services. If the retailer who sells your machine is not one of our authorised dealers, ask him for the address of your nearest service workshop.

This operator's manual is a valuable document. By following its' content (using, service, maintenance etc) the life span and the second-hand value of the machine can be extended. If you will sell this machine, make sure that the buyer will get the operator's manual.

More than 300 years of innovation

Husqvarna AB is a Swedish company based on a tradition that dates back to 1689, when the Swedish King Charles XI ordered the construction of a factory for production of muskets. At that time, the foundation was already laid for the engineering skills behind the development of some of the world's leading products in areas such as hunting weapons, bicycles, motorcycles, domestic appliances, sewing machines and outdoor products.

Husqvarna is the global leader in outdoor power products for forestry, park maintenance and lawn and garden care, as well as cutting equipment and diamond tools for the construction and stone industries.

User responsibility

It is the owner's/employer's responsibility that the operator has sufficient knowledge about how to use the machine safely. Supervisors and operators must have read and understood the Operator's Manual. They must be aware of:

- The machine's safety instructions.
- The machine's range of applications and limitations.
- How the machine is to be used and maintained.

The manufacturer's reservation

All information and all data in the Operator's Manual were applicable at the time the Operator's Manual was sent to print.

Husqvarna AB has a policy of continuous product development and therefore reserves the right to modify the design and appearance of products without prior notice.

Symbols on the machine

Environmental marking. Symbols on the product or its packaging indicate that this product cannot be handled as domestic waste. It must instead be submitted to an appropriate recycling station for the recovery of electrical and electronic equipment.



By ensuring that this product is taken care of correctly, you can help to counteract the potential negative impact on the environment and people that can otherwise result through the incorrect waste management of this product.

For more detailed information about recycling this product, contact your municipality, your domestic waste service or the shop from where you purchased the product.

This product is in accordance with applicable EC directives.



Other symbols/decals on the machine refer to special certification requirements for certain markets.

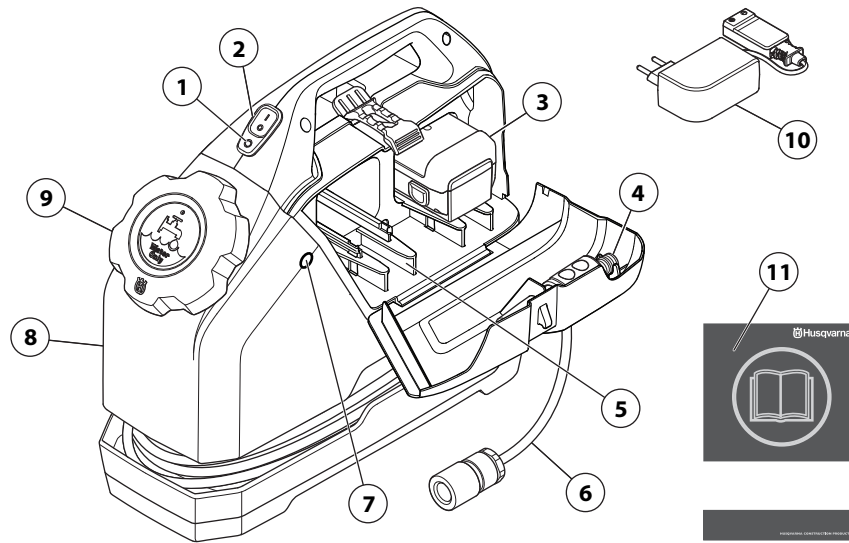
Features

Values such as high performance, reliability, innovative technology, advanced technical solutions and environmental considerations distinguish Husqvarna's products.

Some of the unique features of your product are described below.

- Automatic shutdown of pump when the tank is empty of water.
- Dynamic pump speed control Provides constant pressure/flow independent of battery's charge cycle.
- Overload protection for pump

PRESENTATION



What is what on the water tank?

- | | |
|-------------------------------|----------------------|
| 1 Battery status | 7 12-24 V outlet |
| 2 Start- and stop button | 8 Tank |
| 3 Battery | 9 Cap |
| 4 Nozzle | 10 Battery charger |
| 5 "Parking" for spare battery | 11 Operator's manual |
| 6 Hose | |

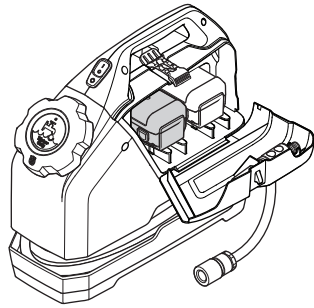
OPERATING

Battery

General

— **CAUTION!** —

An exhausted battery must not be disposed of as household garbage! Leave it at your nearest service agent or collection point.



The battery has a capacity of 2 hours. The surrounding temperature affects how quick the battery runs down. The battery can cope with temperatures from 5 to 45°C (40-115°F)

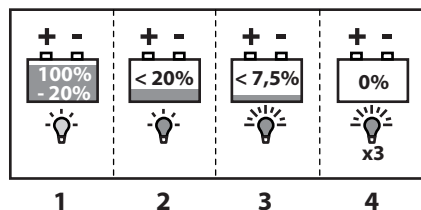
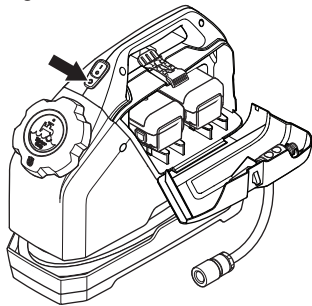
A flat battery takes approx. 2 to 3 hours to charge.

A spare battery can be stored in the "parking space" by the standard battery slot.

If the product is not used for a longer period of time, remove the battery from the standard slot. The battery can be stored in the "parking space".

Battery status

The light diode on the water tank indicates the following:



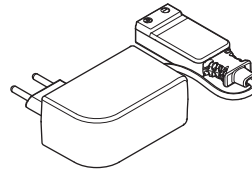
- 1 Flashing green diode - battery level between 100 to 20%.
- 2 Flashing red diode - battery level under 20%.
- 3 Flashing red diode with high frequency - battery level under 7.5%.
- 4 Red diode flashing three times - Battery completely flat.

Charge the battery

— **CAUTION!** —

Voltage surges damage the battery and charger. Check that the mains voltage corresponds with that stated on the charger.

- Put the battery in the charger supplied.



- Connect the battery charger to the power socket. A flat battery takes approx. 2 to 3 hours to charge.
- Remove the battery from the charger when the battery is fully charged.
- Disconnect the power plug.

Charge status

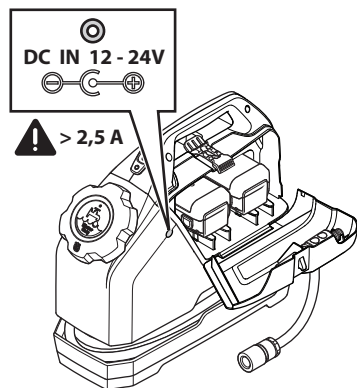
The light diode on the charger indicates the following:

- Constant lit red diode - charge in progress.
- Flashing red diode with long intervals (turns to solid red light) - very low voltage.
- Flashing red diode with short intervals - warning! Faulty battery or short circuit!
- Constant lit green diode - fully charged.

OPERATING

External power supply

The water tank can be connected to an external power source via a 12 to 24 V socket.



The connected AC/DC transformer must comply with the following demands:

- Outgoing voltage: DC 15-20 V.
- Amperage: Min 2500 mA.
- Socket: EIAJ RC-5320.

When the water tank is connected to an external power source, the battery is not used.

The battery does not charge when an external power source is connected. Use the supplied battery charger to charge the battery.

Storage

Store the equipment in a lockable area so that it is out of reach of children and unauthorized persons.

Store the battery in a dry place at normal room temperature. Do not expose it to direct sunlight, strong heat or moisture.

Starting and stopping

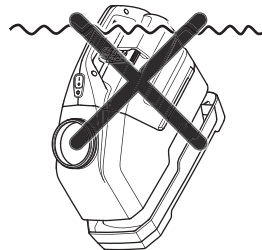
Before starting

— ⚠ CAUTION! —

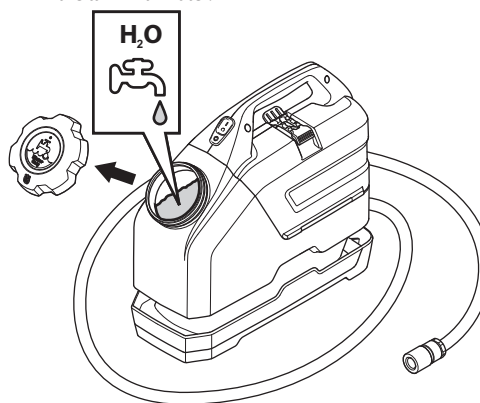
This machine is used in combination with other products. Please read the manual provided with the products carefully and make sure you understand the instructions before using the machine.

— NOTICE! —

The water tank is only intended to be filled with water. Do not immerse the water tank in water.



- Fill the tank with water.



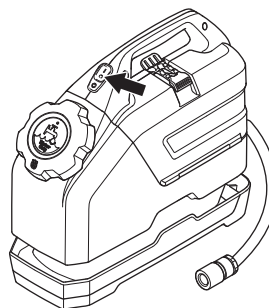
Starting

The water tank can be run in two settings with various water pressures/water flows.

- Position 1 provides a water pressure of 0.6 bar (8.7 psi) and a water flow of 0-3 l/min (0-0.8 gal/min).
- Position 2 provides a water pressure of 1.1 bar (14.5 psi) and a water flow of 3-5 l/min (0.8-1.3 gal/min)

Position 1

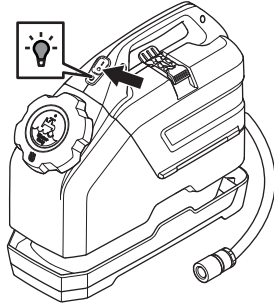
- Press in the button and release.



Position 2

- Keep the button pressed in until the diode turns green.

OPERATING



Stopping

- Press the button again to shut the pump down.

The pump shuts down automatically if the container runs out of water.

Trouble shooting

Problem	Procedure	Steps
The diode on the machine flashes red three times and it does not start.	Battery flat	Charging the battery
The machine does not start even if the battery is charged.	The battery is in the wrong battery holder.	Check that the battery is in the right-hand battery holder and not in the "parking space".
The machine does not pump water when it starts, but the pump is running.	Air bubble in the pump house.	Wait one minute and start again.
	Blocked filter mesh in the pump holder.	Remove and clean the pump.
The machine does not pump water when it starts, and the pump is not running.	Blockage in the pump, possible blocked filter mesh.	Remove and clean the pump.
	Water frozen in the pump.	Thaw the machine slowly.
Low water flow from the machine.	Blocked filter mesh in the pump holder.	Remove and clean the pump.

The product is intended to be used with a number of different power cutters and core drills on the market. This product is not recommended for high performance machines requiring high water flows/water pressures e.g. diamond chain saws.

TECHNICAL DATA

Technical data

Water capacity, l (gal)	15 (3.7)
Weight, empty, kg (lb)	3,9 (8.6)
Dimensions, unpacked (L x W x H), mm (inch)	420 x 165 x 460 (16 1/2 x 6 1/2 x 18)
Type of battery	Lithium-Ion, 18 V/1.6Ah
Battery capacity, h	2
Water pressure, position I, bar (psi)	0,6 (8.7)
Water pressure, position II, bar (psi)	1,1 (14.5)
Charger	18 V/600 mA
External power supply	12-24 V, min 2500 mA
Type of hose	3/8"
Hose length, mm (foot)	3 (10)

EC-declaration of conformity

(Applies to Europe only)

Husqvarna AB, SE-433 81 Göteborg, Sweden, tel: +46-31-949000, declares under sole responsibility that the water tank Husqvarna WT 15 dating from 2010 serial numbers and onwards (the year is clearly stated on the rating plate, followed by the serial number), complies with the requirements of the COUNCIL'S DIRECTIVE:

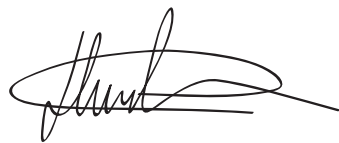
- of May 17, 2006 "relating to machinery" **2006/42/EC**
- of December 15, 2004 "relating to electromagnetic compatibility" **2004/108/EC**.
- of May 8, 2000 "relating to the noise emissions in the environment" **2000/14/EC**.

For information relating to noise emissions, see the chapter Technical data.

The following standards have been applied:

EN ISO 55014-1:2006, EN 60335-2-29:2004.

Gothenburg 7 may 2010



Henric Andersson

Vice President, Head of Power Cutters and Construction Equipment

(Authorized representative for Husqvarna AB and responsible for technical documentation.)

PRESENTATION

Dear customer!

Thank you for choosing a Husqvarna product!

It is our wish that you will be satisfied with your product and that it will be your companion for a long time. A purchase of one of our products gives you access to professional help with repairs and services. If the retailer who sells your machine is not one of our authorised dealers, ask him for the address of your nearest service workshop.

This operator's manual is a valuable document. By following its content (using, service, maintenance etc) the life span and the second-hand value of the machine can be extended. If you ever lend or sell this machine, make sure that the borrower or buyer gets the operator's manual, so they will also know how to properly maintain and use it.

More than 300 years of innovation

Husqvarna AB is a Swedish company based on a tradition that dates back to 1689, when the Swedish King Charles XI ordered the construction of a factory for production of muskets. At that time, the foundation was already laid for the engineering skills behind the development of some of the world's leading products in areas such as hunting weapons, bicycles, motorcycles, domestic appliances, sewing machines and outdoor products.

Husqvarna is the global leader in outdoor power products for forestry, park maintenance and lawn and garden care, as well as cutting equipment and diamond tools for the construction and stone industries.

User responsibility

It is the owner's/employer's responsibility that the operator has sufficient knowledge about how to use the machine safely. Supervisors and operators must have read and understood the Operator's Manual. They must be aware of:

- The machine's safety instructions.
- The machine's range of applications and limitations.
- How the machine is to be used and maintained.

The manufacturer's reservation

All information and all data in the Operator's Manual were applicable at the time the Operator's Manual was sent to print.

Husqvarna AB has a policy of continuous product development and therefore reserves the right to modify the design and appearance of products without prior notice.

For customer assistance, contact us at our website:
www.usa.husqvarna.com

Symbols on the machine

Environmental marking. Symbols on the product or its packaging indicate that this product cannot be handled as domestic waste. It must instead be submitted to an appropriate recycling station for the recovery of electrical and electronic equipment.



By ensuring that this product is taken care of correctly, you can help to counteract the potential negative impact on the environment and people that can otherwise result through the incorrect waste management of this product.

For more detailed information about recycling this product, contact your municipality, your domestic waste service or the shop from where you purchased the product.

Other symbols/decals on the machine refer to special certification requirements for certain markets.

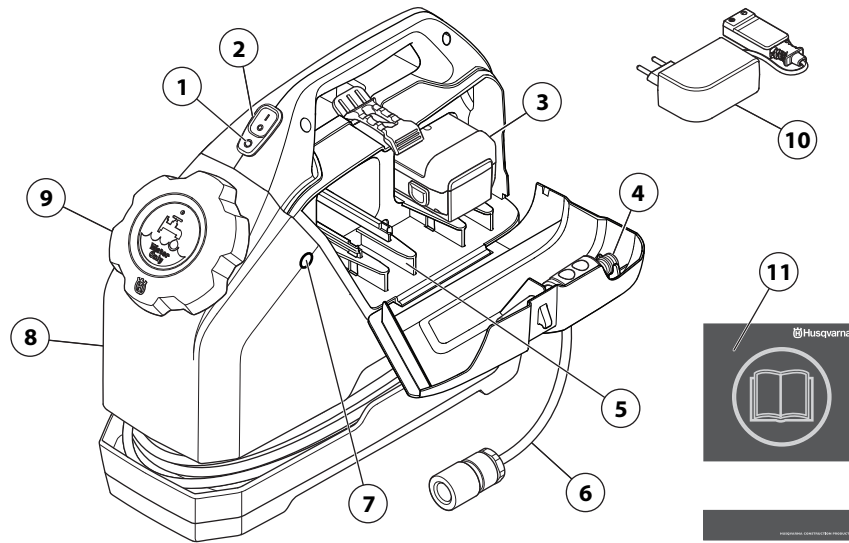
Features

Values such as high performance, reliability, innovative technology, advanced technical solutions and environmental considerations distinguish Husqvarna's products.

Some of the unique features of your product are described below.

- Automatic shutdown of pump when the tank is empty of water.
- Dynamic pump speed control Provides constant pressure/flow independent of battery's charge cycle.
- Overload protection for pump

PRESENTATION



What is what on the water tank?

- | | |
|-------------------------------|----------------------|
| 1 Battery status | 7 12-24 V outlet |
| 2 Start- and stop button | 8 Tank |
| 3 Battery | 9 Cap |
| 4 Nozzle | 10 Battery charger |
| 5 "Parking" for spare battery | 11 Operator's manual |
| 6 Hose | |

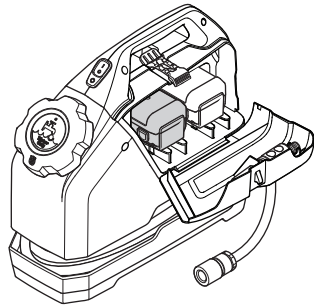
OPERATING

Battery

General

— **CAUTION!** —

An exhausted battery must not be disposed of as household garbage! Leave it at your nearest service agent or collection point.



The battery has a capacity of 2 hours. The surrounding temperature affects how quick the battery runs down. The battery can cope with temperatures from 5 to 45°C (40-115°F)

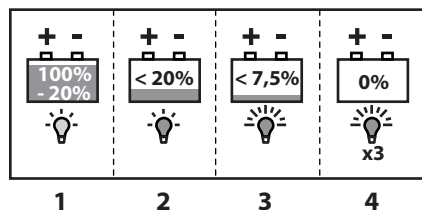
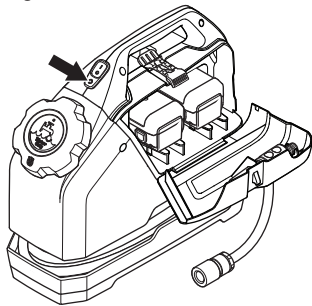
A flat battery takes approx. 2 to 3 hours to charge.

A spare battery can be stored in the "parking space" by the standard battery slot.

If the product is not used for a longer period of time, remove the battery from the standard slot. The battery can be stored in the "parking space".

Battery status

The light diode on the water tank indicates the following:



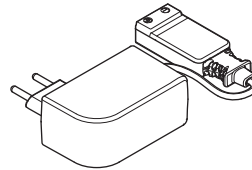
- 1 Flashing green diode - battery level between 100 to 20%.
- 2 Flashing red diode - battery level under 20%.
- 3 Flashing red diode with high frequency - battery level under 7.5%.
- 4 Red diode flashing three times - Battery completely flat.

Charge the battery

— **CAUTION!** —

Voltage surges damage the battery and charger. Check that the mains voltage corresponds with that stated on the charger.

- Put the battery in the charger supplied.



- Connect the battery charger to the power socket. A flat battery takes approx. 2 to 3 hours to charge.
- Remove the battery from the charger when the battery is fully charged.
- Disconnect the power plug.

Charge status

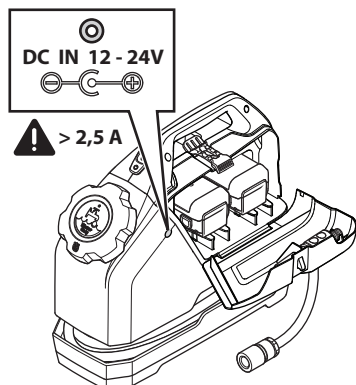
The light diode on the charger indicates the following:

- Constant lit red diode - charge in progress.
- Flashing red diode with long intervals (turns to solid red light) - very low voltage.
- Flashing red diode with short intervals - warning! Faulty battery or short circuit!
- Constant lit green diode - fully charged.

OPERATING

External power supply

The water tank can be connected to an external power source via a 12 to 24 V socket.



The connected AC/DC transformer must comply with the following demands:

- Outgoing voltage: DC 15-20 V.
- Amperage: Min 2500 mA.
- Socket: EIAJ RC-5320.

When the water tank is connected to an external power source, the battery is not used.

The battery does not charge when an external power source is connected. Use the supplied battery charger to charge the battery.

Storage

Store the equipment in a lockable area so that it is out of reach of children and unauthorized persons.

Store the battery in a dry place at normal room temperature. Do not expose it to direct sunlight, strong heat or moisture.

Starting and stopping

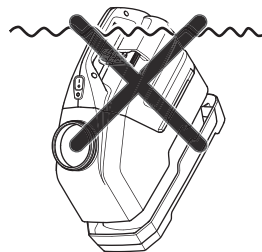
Before starting

— ⚠ CAUTION! —

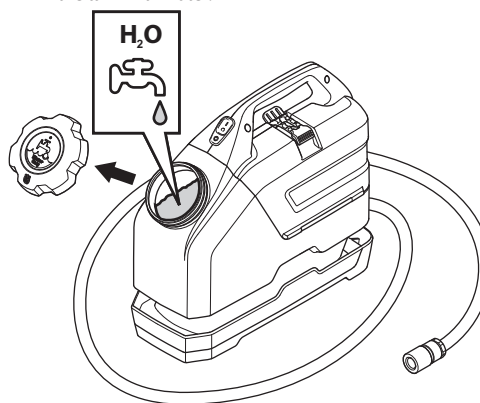
This machine is used in combination with other products. Please read the manual provided with the products carefully and make sure you understand the instructions before using the machine.

— NOTICE! —

The water tank is only intended to be filled with water. Do not immerse the water tank in water.



- Fill the tank with water.



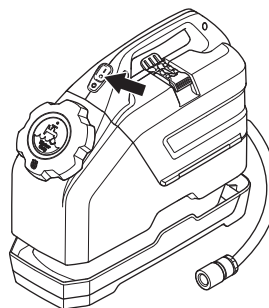
Starting

The water tank can be run in two settings with various water pressures/water flows.

- Position 1 provides a water pressure of 0.6 bar (8.7 psi) and a water flow of 0-3 l/min (0-0.8 gal/min).
- Position 2 provides a water pressure of 1.1 bar (14.5 psi) and a water flow of 3-5 l/min (0.8-1.3 gal/min)

Position 1

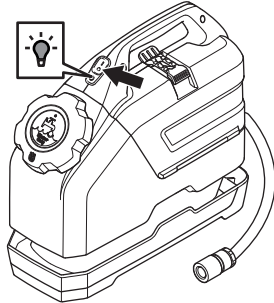
- Press in the button and release.



Position 2

- Keep the button pressed in until the diode turns green.

OPERATING



Stopping

- Press the button again to shut the pump down.

The pump shuts down automatically if the container runs out of water.

Trouble shooting

Problem	Procedure	Steps
The diode on the machine flashes red three times and it does not start.	Battery flat	Charging the battery
The machine does not start even if the battery is charged.	The battery is in the wrong battery holder.	Check that the battery is in the right-hand battery holder and not in the "parking space".
The machine does not pump water when it starts, but the pump is running.	Air bubble in the pump house.	Wait one minute and start again.
	Blocked filter mesh in the pump holder.	Remove and clean the pump.
The machine does not pump water when it starts, and the pump is not running.	Blockage in the pump, possible blocked filter mesh.	Remove and clean the pump.
	Water frozen in the pump.	Thaw the machine slowly.
Low water flow from the machine.	Blocked filter mesh in the pump holder.	Remove and clean the pump.

The product is intended to be used with a number of different power cutters and core drills on the market. This product is not recommended for high performance machines requiring high water flows/water pressures e.g. diamond chain saws.

TECHNICAL DATA

Technical data

Water capacity, l (gal)	15 (3.7)
Weight, empty, kg (lb)	3,9 (8.6)
Dimensions, unpacked (L x W x H), mm (inch)	420 x 165 x 460 (16 1/2 x 6 1/2 x 18)
Type of battery	Lithium-Ion, 18 V/1.6Ah
Battery capacity, h	2
Water pressure, position I, bar (psi)	0,6 (8.7)
Water pressure, position II, bar (psi)	1,1 (14.5)
Charger	18 V/600 mA
External power supply	12-24 V, min 2500 mA
Type of hose	3/8"
Hose length, mm (foot)	3 (10)