

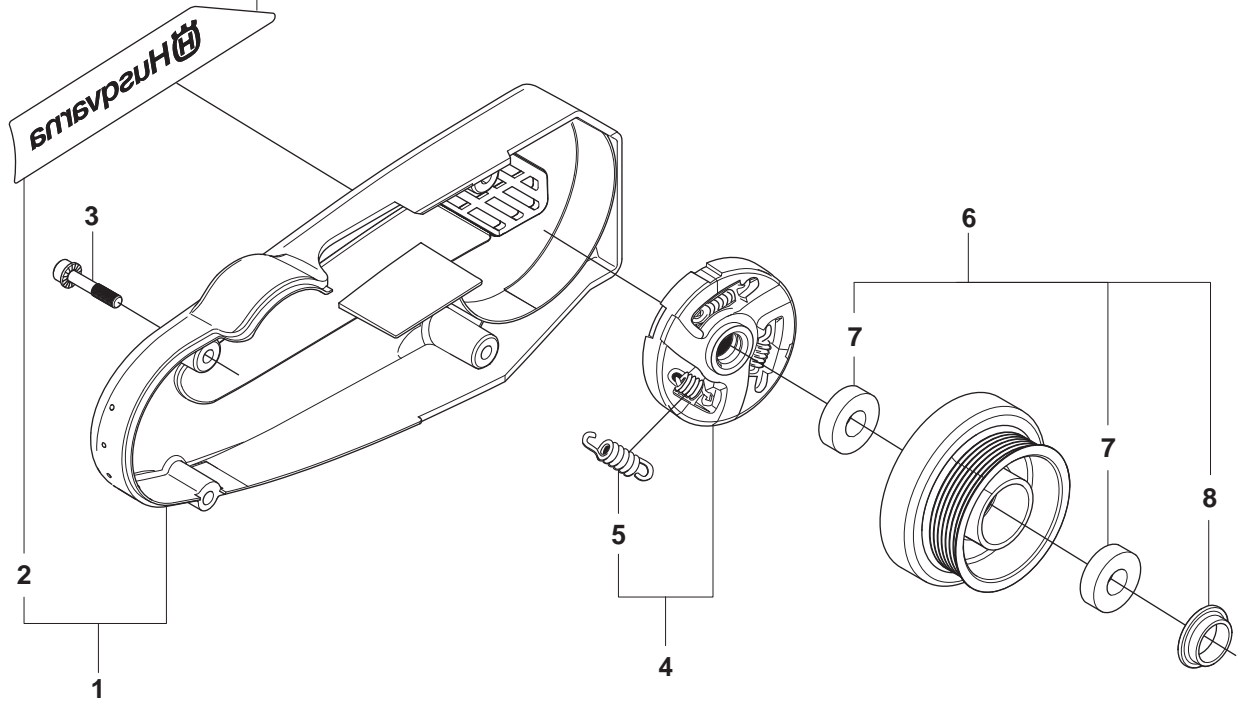
K 970 Ring
Reservdelar
Spare parts
Ersatzteile
Pieces de rechange
Piezas de repuesto
Ricambi
Peças sobresselente

No.	Pos.	Description	No.	Pos.	Description
501 19 22-01	Q	TOOL CASING	506 03 32-02	J	SCREW
501 27 08-01	J	GUIDE BUSHING	506 09 56-03	L	HOSE CLAMP
501 37 56-03	F	FLYWHEEL	506 09 56-06	L	HOSE CLAMP
501 48 54-02	F	SPARK PLUG CAP	506 09 58-12	L	HOSE
501 63 48-01	F	SPRING	506 13 95-11	N	WASHER
501 67 32-03	F	PAWL	506 13 96-01	N	COLLAR SCREW
501 83 98-01	F	CABLE	506 17 83-04	N	GEAR WHEEL
501 97 18-01	D	SCREW	506 23 20-11	D	CHOKE
501 98 10-20	E	SCREW	506 24 69-06	L	BLADE GUARD
501 98 10-80	N	SCREW	506 25 14-01	E	GROMMET
502 44 58-01	D	GASKET KIT	506 25 30-01	E	COMPRESSION SPRING
502 44 59-01	D	REPAIR KIT	506 25 59-03	K	TANK CAP ASSY
502 47 16-01	K	GROUND SUPPORT	506 25 73-01	N	COMPRESSION SPRING
502 47 18-01	K	THROTTLE CONTROL	506 25 81-02	E	STARTER PULLEY
503 12 79-01	E	STARTER HANDLE	506 25 89-01	E	RECOIL SPRING
503 14 51-01	A	CLUTCH SPRING	506 26 22-02	L	WHEEL
503 20 00-45	N	SCREW	506 26 31-01	E	SPACING SLEEVE
503 20 54-35	M	SCREW	506 26 41-01	K	FUEL FILTER
503 21 07-22	E	SCREW	506 26 41-11	K	FUEL FILTER ASSY
503 21 28-06	F	SCREW	506 27 11-01	K	HOSE CLAMP
503 21 28-10	EK	SCREW	506 27 25-01	D	WEAR PROTECTION
503 21 46-01	L	SCREW	506 27 75-01	N	PULLEY
503 21 53-12	N	SCREW	506 28 06-05	B	BELT TENSIONER ASSY
503 21 53-16	D	SCREW	506 28 09-05	A	BELT GUARD
503 21 53-20	FLN	SCREW	506 29 21-01	K	GASKET
503 21 53-21	A	SCREW	506 29 57-02	L	NIPPLE
503 21 53-25	G	SCREW	506 29 88-01	L	FILTER
503 21 53-26	C	SCREW	506 30 33-01	P	SPACING SLEEVE
503 21 53-30	CD	SCREW	506 30 33-02	M	SPACING SLEEVE
503 21 53-49	J	SCREW	506 30 34-01	MP	DRIVER
503 21 53-56	CJ	SCREW	506 30 35-01	P	BUMPER
503 21 54-20	KL	SCREW	506 31 22-02	N	DRIVER
503 22 00-01	MN	NUT	506 31 28-01	L	COVER PLATE
503 22 04-01	MP	NUT FLANGE	506 31 30-01	K	LABLE
503 22 04-01	P	NUT	506 31 45-01	L	SPACER TUBE
503 22 10-11	F	NUT	506 31 68-01	P	SPACING SLEEVE
503 23 00-42	F	WASHER STEEL	506 31 68-02	M	SPACING SLEEVE
503 23 01-01	F	WASHER STEEL	506 31 69-01	AP	DUST COVER
503 23 01-12	N	WASHER STEEL	506 31 86-02	F	STOP SWITCH
503 23 04-01	N	WASHER	506 32 17-01	M	WASHER
503 23 04-02	G	WASHER	506 32 80-01	N	LOCKING BUTTON
503 23 04-03	MN	WASHER	506 33 08-01	M	THREAD BUSHING
503 23 51-09	F	SPARK PLUG	506 33 49-02	L	SPACER TUBE
503 25 00-02	HJ	BALL BEARING	506 33 49-03	M	SPACER TUBE
503 25 21-01	N	BALL BEARING	506 33 51-01	B	ROLLER
503 25 24-01	BMP	BALL BEARING	506 33 52-01	B	SPACER
503 25 61-01	GH	NEEDLE BEARING	506 33 53-01	B	LEVER
503 26 02-04	GJQ	SEALING RING	506 33 53-02	B	LEVER
503 26 20-01	MP	SEALING RING	506 33 54-01	B	SPACER
503 26 21-01	N	SEALING RING	506 33 56-15	E	STARTER CORD
503 26 30-08	M	O-RING	506 33 56-50	E	STARTER CORD
503 26 30-21	L	O-RING	506 33 65-01	PL	SEALING RING
503 26 30-22	N	O-RING	506 33 96-01	L	BOLT
503 26 30-25	L	O-RING	506 34 39-01	NP	WIPER
503 26 30-26	M	O-RING	506 34 63-01	M	WASHER
503 26 60-03	L	COUPLER	506 34 64-01	M	SCREW
503 28 90-35	G	PISTON RING	506 34 76-01	P	COMPRESSION SPRING
503 57 89-01	K	HOLDER ASSY	506 34 90-01	L	SEALING
503 66 56-01	G	DECOMPRESSION VALVE	506 34 91-01	J	BRACKET ASSY
503 70 15-01	A	CLUTCH ASSY	506 35 15-02	N	DRIVE SHAFT
503 73 58-01	K	BUSHING	506 35 18-07	M	LEVER ASSY
504 11 67-01	L	SPRING	506 35 19-03	MN	WEAR PROTECTION
505 14 84-01	D	LEVER	506 35 20-05	P	GUIDE ROLLER
505 27 75-16	F	INSULATING CAP	506 35 21-03	M	SUPPORT ROLLER
505 28 33-06	D	HOSE CLAMP	506 35 22-05	L	SPRAY GUARD ASSY
505 34 94-01	E	STARTER COVER	506 35 23-04	N	GEAR WHEEL ASSY
505 42 45-02	K	ANTIVIBRATION ELEMENT	506 35 27-01	L	PROTECTIVE SPRING
505 57 41-01	JLMN	SCREW	506 35 52-01	Q	TOOL
505 57 49-01	M	ADJUSTING SCREW	506 36 36-01	Q	L-SPANNER
506 00 69-01	F	SCREW	506 36 38-04	Q	TOOL KIT

No.	Pos.	Description	No.	Pos.	Description
506 37 28-01	G	MUFFLER	544 22 98-03	GJQ	GASKET KIT
506 37 46-02	N	FLANGE WASHER	544 23 26-01	D	CHISEL GUIDE
506 37 47-01	N	SEALING COLLAR	544 28 75-02	E	COOLING AIR CONDUCTOR
506 37 48-01	N	SEALING HOLDER	544 32 49-30	K	FUEL HOSE
506 37 49-01	N	SLEEVE	544 32 50-02	K	FUEL HOSE
506 37 50-02	N	SPACER	544 90 84-01	B	BELT
506 37 63-01	M	SPACER	544 93 31-01	A	LABEL
506 37 64-01	M	RUBBER BUSHING	544 93 56-03	G	CYLINDER ASSY
506 37 81-01	GJP	GASKET MUFFLER	574 26 76-01	H	CRANKSHAFT ASSY
506 37 93-02	MP	SPACING SLEEVE	574 44 42-01	K	CLIPS
506 38 09-01	P	BEARING CAGE	574 50 58-04	K	FUEL TANK ASSY
506 38 11-01	P	CAP	574 50 73-03	E	STARTER ASSY
506 38 21-02	P	CAP	575 52 65-01	K	CHECK VALVE
506 38 22-02	P	KNOB	576 42 69-03	C	CYLINDER COVER
506 38 26-01	Q	COMBINATION TOOL	576 43 14-01	C	COVER
506 38 29-01	L	NIPPLE	576 43 14-01	C	COVER
506 38 33-01	L	WATER BLADE	576 49 04-01	DK	THROTTLE CABLE ASSY
506 38 49-02	Q	LUBRICATION GUN	576 49 94-01	GJQ	GASKET
506 38 59-04	L	HOSE ASSY	576 73 80-01	C	FILTER COVER
506 38 60-12	L	VALVE ASSY	576 85 16-02	F	PROTECTIVE HOSE
506 38 78-34	F	IGNITION CABLE	576 88 12-01	J	CRANKCASE ASSY
506 38 90-07	N	CHASSIS	576 88 12-02	S	LONG BLOCK
506 38 97-01	P	PIN	578 06 53-01	C	SEALING
506 39 95-01	M	SEALING	720 12 40-20	K	PARALLEL PIN
506 41 32-02	G	PISTON	721 12 52-70	N	PIN
506 41 39-04	GJP	GASKET	721 42 52-50	N	SPRING PIN
506 41 41-01	D	INLET PIPE	721 44 06-00	N	PIN
506 41 42-01	D	PLATE	725 53 81-56	M	SCREW
506 41 44-01	H	CUP	725 54 59-05	N	SCREW
506 49 32-01	P	SHAFT	729 52 89-71	L	SCREW
506 49 32-02	M	SHAFT	732 21 16-01	B	NUT
506 49 33-03	M	COVER	734 48 80-01	L	WASHER
506 49 34-01	P	BEARING CAGE	735 31 08-00	N	CIRCLIP
510 11 56-01	F	IGNITION MODULE	735 31 28-10	BMP	CIRCLIP
510 24 39-01	D	FILTER CONNECTION	737 44 13-00	G	CIRCLIP
510 24 41-04	C	AIR FILTER	738 88 10-01	N	LUBRICATION NIPPLE
510 25 52-01	K	THROTTLE LOCK OUT	740 42 04-00	M	O-RING
521 92 67-01	D	INLET PIPE	740 42 05-00	L	O-RING
522 79 96-01	K	HOLDER ASSY	740 42 24-00	N	O-RING
522 85 61-01	J	RUBBER BUSHING	740 43 13-00	E	O-RING
522 85 62-01	D	FLANGE INLET PIPE	740 48 20-12	P	RING
522 94 20-01	D	CARBURETTOR	740 48 25-02	NP	O-RING
523 02 75-01	K	HANDLE			
525 57 11-01	E	DECAL			
525 57 16-03	C	DECAL			
525 57 20-01	K	DECAL START INSTRUCTION			
525 61 70-04	C	SEALING			
525 62 10-01	A	DRIVING PULLEY ASSY			
525 76 35-01	C	DECAL			
525 83 18-01	A	BALL BEARING			
537 04 24-04	K	FUEL HOSE			
537 20 56-01	K	COVER			
537 20 85-01	K	CABLE LEVER			
537 20 98-01	K	SPRING			
537 21 03-05	K	ANTIVIBRATION ELEMENT			
537 21 03-09	K	ANTIVIBRATION ELEMENT			
537 21 03-10	K	ANTIVIBRATION ELEMENT			
537 35 95-01	K	TANK VENT ASSY			
540 05 49-02	K	AIR PURGE			
544 06 12-01	K	SCREW			
544 07 76-01	NP	SLEEVE			
544 08 04-02	Q	GREASE			
544 09 64-01	J	BELT GUIDE			
544 09 77-01	J	BUSHING			
544 11 39-01	D	CONSOLE			
544 15 01-01	D	FLANGE			
544 21 52-01	G	HEAT DEFLECTOR			
544 21 84-01	BG	SCREW			
544 21 84-37	BL	SCREW			
544 21 84-47	L	SCREW			

A K970 Ring

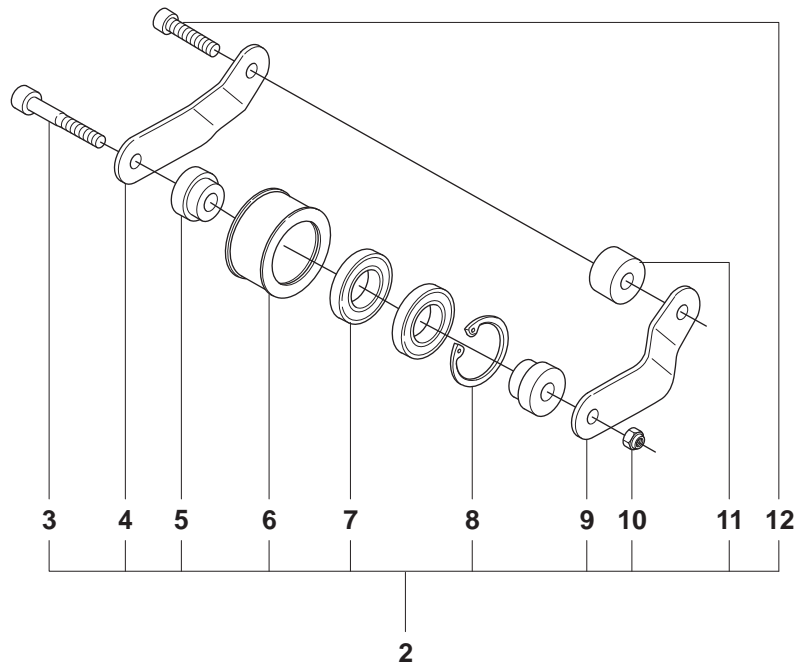
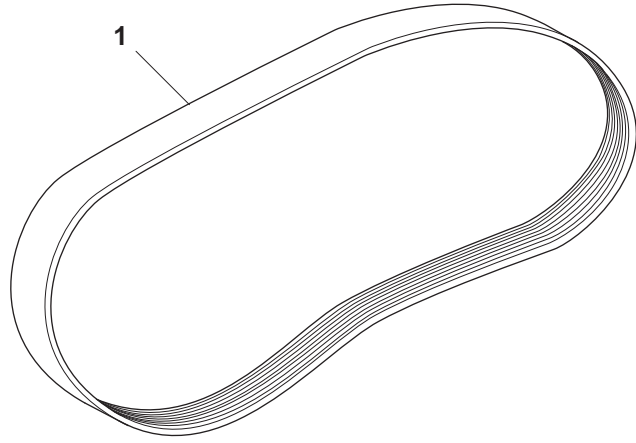
 **Husqvarna**



Page A
K970 Ring

Pos.	Part No.	Description	Quantity	Notes	New Part
1	506 28 09-05	BELT GUARD	1	Incl. 2	
2	544 93 31-01	LABEL	1		
3	503 21 53-21	SCREW	4		
4	503 70 15-01	CLUTCH ASSY	1	Incl. 5	
5	503 14 51-01	CLUTCH SPRING	3		
6	525 62 10-01	DRIVING PULLEY ASSY	1	Incl 7 - 8	
7	525 83 18-01	BALL BEARING	2		
8	506 31 69-01	DUST COVER	1		

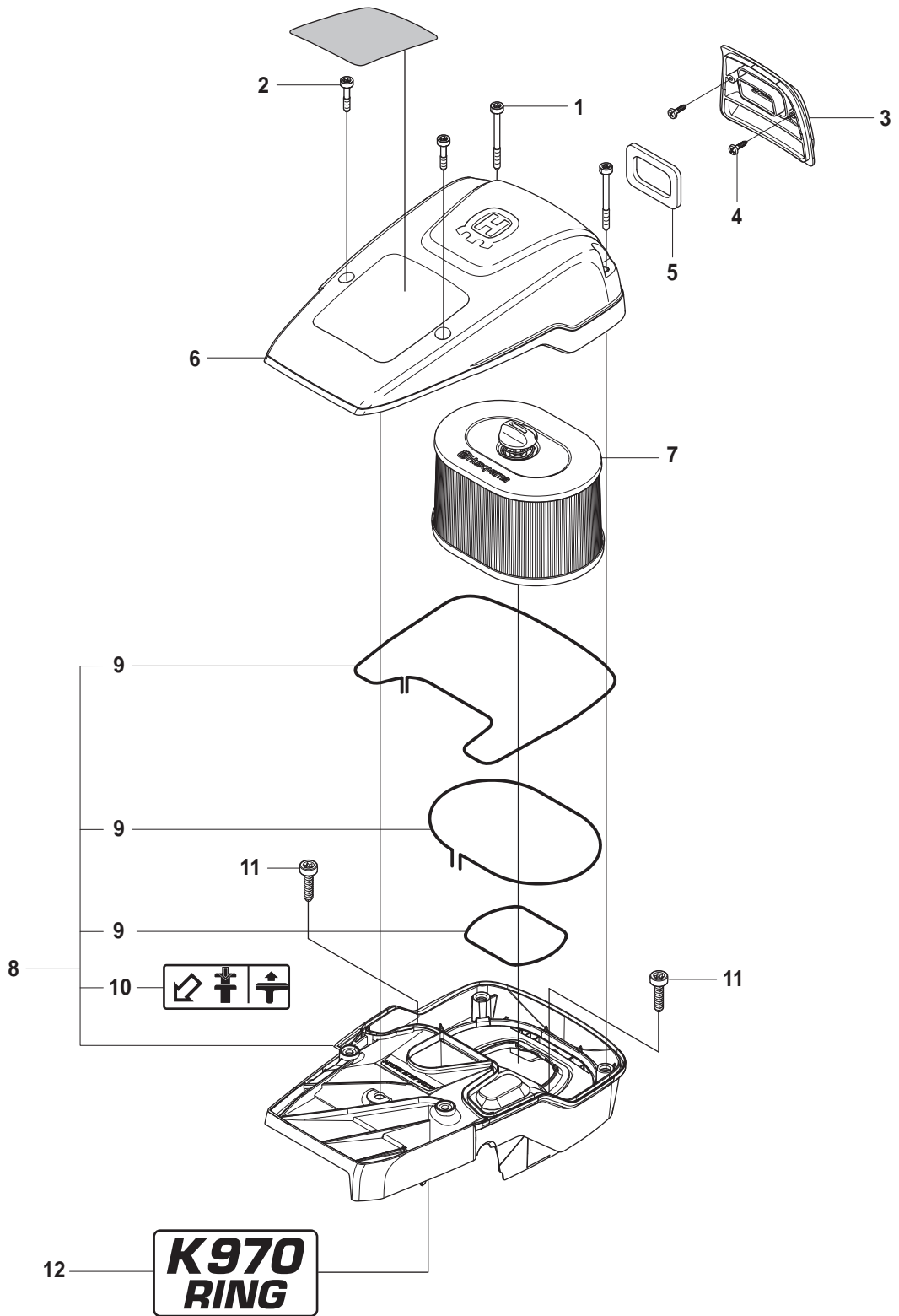
B K970 Ring



Page B
K970 Ring

Pos.	Part No.	Description	Quantity	Notes	New Part
1	544 90 84-01	BELT	1		
2	506 28 06-05	BELT TENSIONER ASSY	1	Incl. 3 - 12	
3	544 21 84-37	SCREW	1		
4	506 33 53-02	LEVER	1		
5	506 33 52-01	SPACER	2		
6	506 33 51-01	ROLLER	1		
7	503 25 24-01	BALL BEARING	2		
8	735 31 28-10	CIRCLIP	1		
9	506 33 53-01	LEVER	1		
10	732 21 16-01	NUT	1		
11	506 33 54-01	SPACER	1		
12	544 21 84-01	SCREW	1		

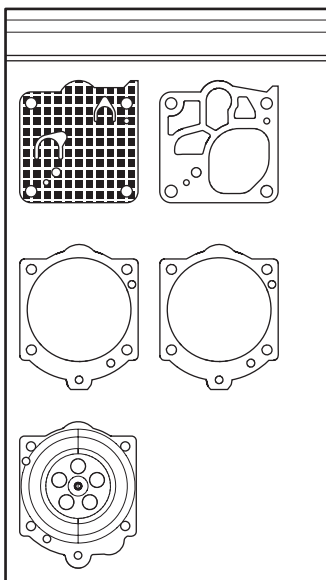
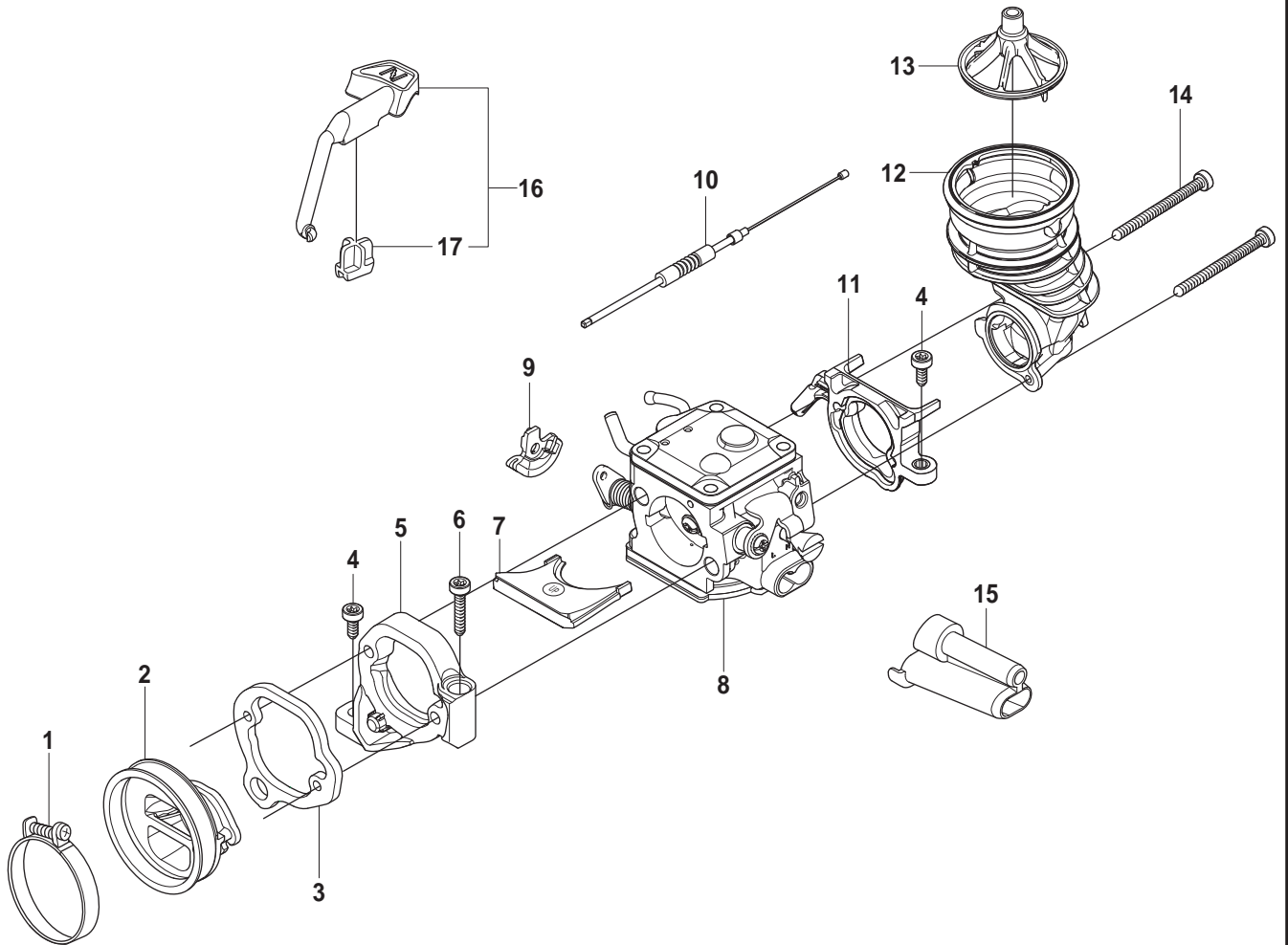
C K970 Ring



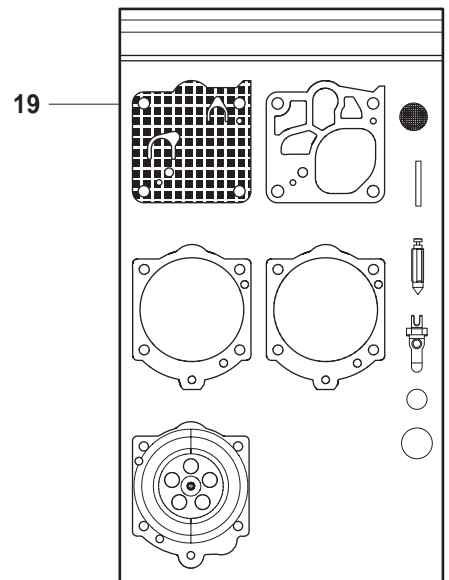
Page C
K970 Ring

Pos.	Part No.	Description	Quantity	Notes	New Part
1	503 21 53-56	SCREW	2		
2	503 21 53-26	SCREW	2		
3	576 43 14-01	COVER	1		
4	729 52 89-71	SCREW	2		
5	578 06 53-01	SEALING	1		
6	576 73 80-01	FILTER COVER	1		
7	510 24 41-04	AIR FILTER	1		
8	576 42 69-03	CYLINDER COVER	1	Incl. 9 - 10	
9	525 61 70-04	SEALING	2	L=1,2 M. Cut to fit	
10	525 76 35-01	DECAL	1		
11	503 21 53-30	SCREW	2		
12	525 57 16-03	DECAL	1		

D K970 Ring



18



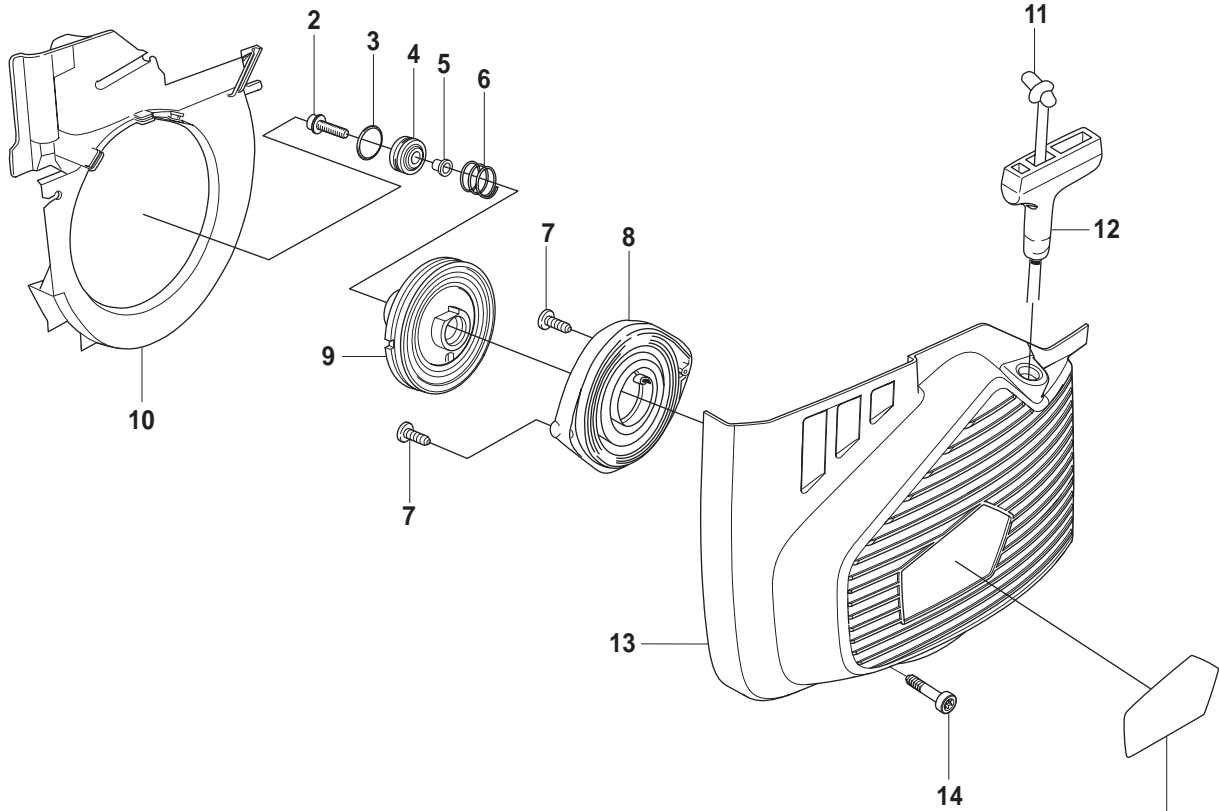
19

Page D
K970 Ring

Pos.	Part No.	Description	Quantity	Notes	New Part
1	505 28 33-06	HOSE CLAMP	1		
2	506 41 41-01	INLET PIPE	1		
3	544 15 01-01	FLANGE	1		
4	503 21 53-16	SCREW	2		
5	544 11 39-01	CONSOLE	1		
6	503 21 53-30	SCREW	1		
7	506 41 42-01	PLATE	1		
8	522 94 20-01	CARBURETTOR	1	Walbro RWJ-5	
9	505 14 84-01	LEVER	1		
10	576 49 04-01	THROTTLE CABLE ASSY	1		
11	522 85 62-01	FLANGE INLET PIPE	1		
12	521 92 67-01	INLET PIPE	1		
13	510 24 39-01	FILTER CONNECTION	1		
14	501 97 18-01	SCREW	2		
15	544 23 26-01	CHISEL GUIDE	1		
16	506 23 20-11	CHOKE	1	Incl. 17	
17	506 27 25-01	WEAR PROTECTION	1		
18	502 44 58-01	GASKET KIT	1	Walbro RWJ-5	
19	502 44 59-01	REPAIR KIT	1	Walbro RWJ-5	

E K970 Ring

1

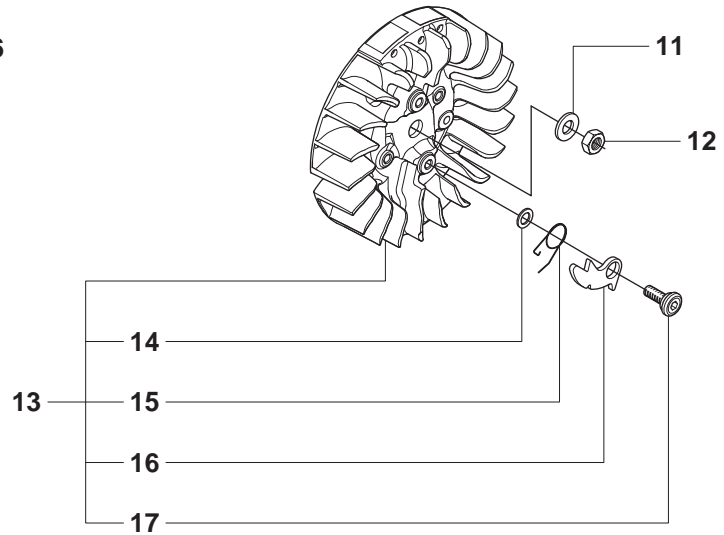
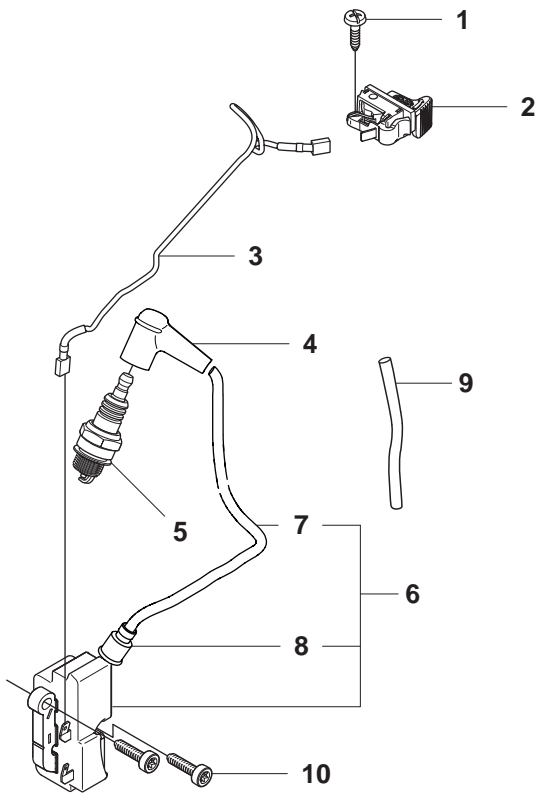


15

Page E
K970 Ring

Pos.	Part No.	Description	Quantity	Notes	New Part
1	574 50 73-03	STARTER ASSY	1	Incl. 2 - 15	
2	503 21 07-22	SCREW	1		
3	740 43 13-00	O-RING	1		
4	506 25 14-01	GROMMET	1		
5	506 26 31-01	SPACING SLEEVE	1		
6	506 25 30-01	COMPRESSION SPRING	1		
7	503 21 28-10	SCREW	2		
8	506 25 89-01	RECOIL SPRING	1		
9	506 25 81-02	STARTER PULLEY	1		
10	544 28 75-02	COOLING AIR CONDUCTOR	1		
11	506 33 56-15	STARTER CORD	1		
11	506 33 56-50	STARTER CORD	1	50 m Coil	
12	503 12 79-01	STARTER HANDLE	1		
13	505 34 94-01	STARTER COVER	1		
14	501 98 10-20	SCREW	4		
15	525 57 11-01	DECAL	1		

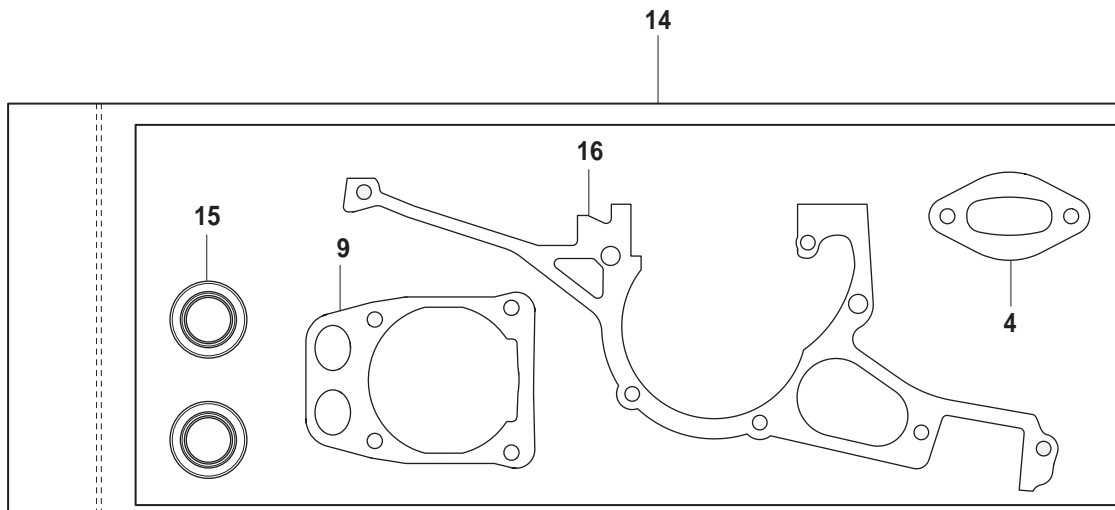
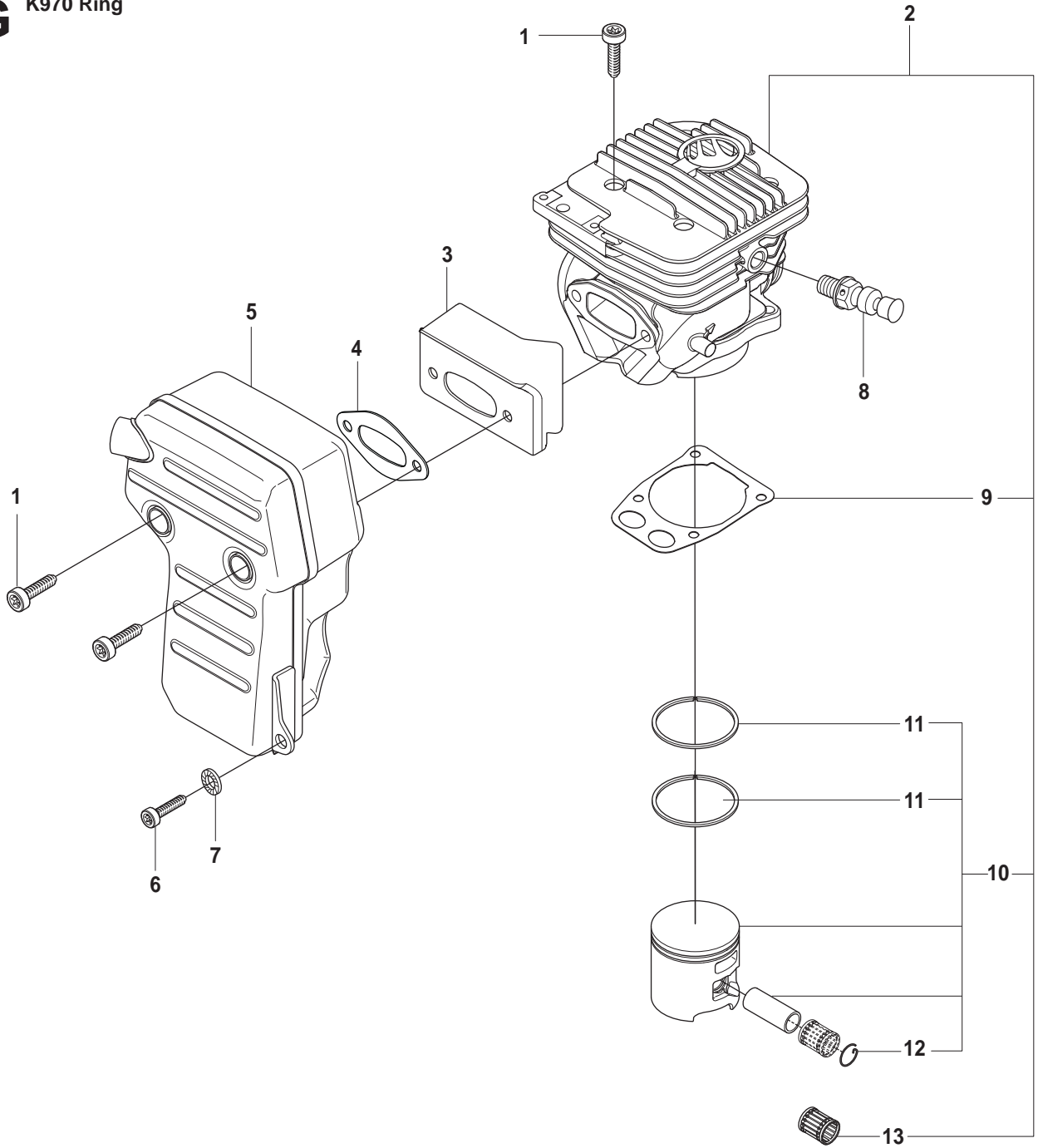
F K970 Ring



Page F
K970 Ring

Pos.	Part No.	Description	Quantity	Notes	New Part
1	503 21 28-06	SCREW	1		
2	506 31 86-02	STOP SWITCH	1		
3	501 83 98-01	CABLE	1		
4	501 48 54-02	SPARK PLUG CAP	1		
5	503 23 51-09	SPARK PLUG	1	RCJ 6Y	
6	510 11 56-01	IGNITION MODULE	1	Incl. 7 - 8	
7	506 38 78-34	IGNITION CABLE	1		
8	505 27 75-16	INSULATING CAP	1		
9	576 85 16-02	PROTECTIVE HOSE	1		
10	503 21 53-20	SCREW	2		
11	503 23 01-01	WASHER STEEL	1		
12	503 22 10-11	NUT	1		
13	501 37 56-03	FLYWHEEL	1	Incl. 14 - 17	
14	503 23 00-42	WASHER STEEL	2		
15	501 63 48-01	SPRING	2		
16	501 67 32-03	PAWL	2		
17	506 00 69-01	SCREW	2		

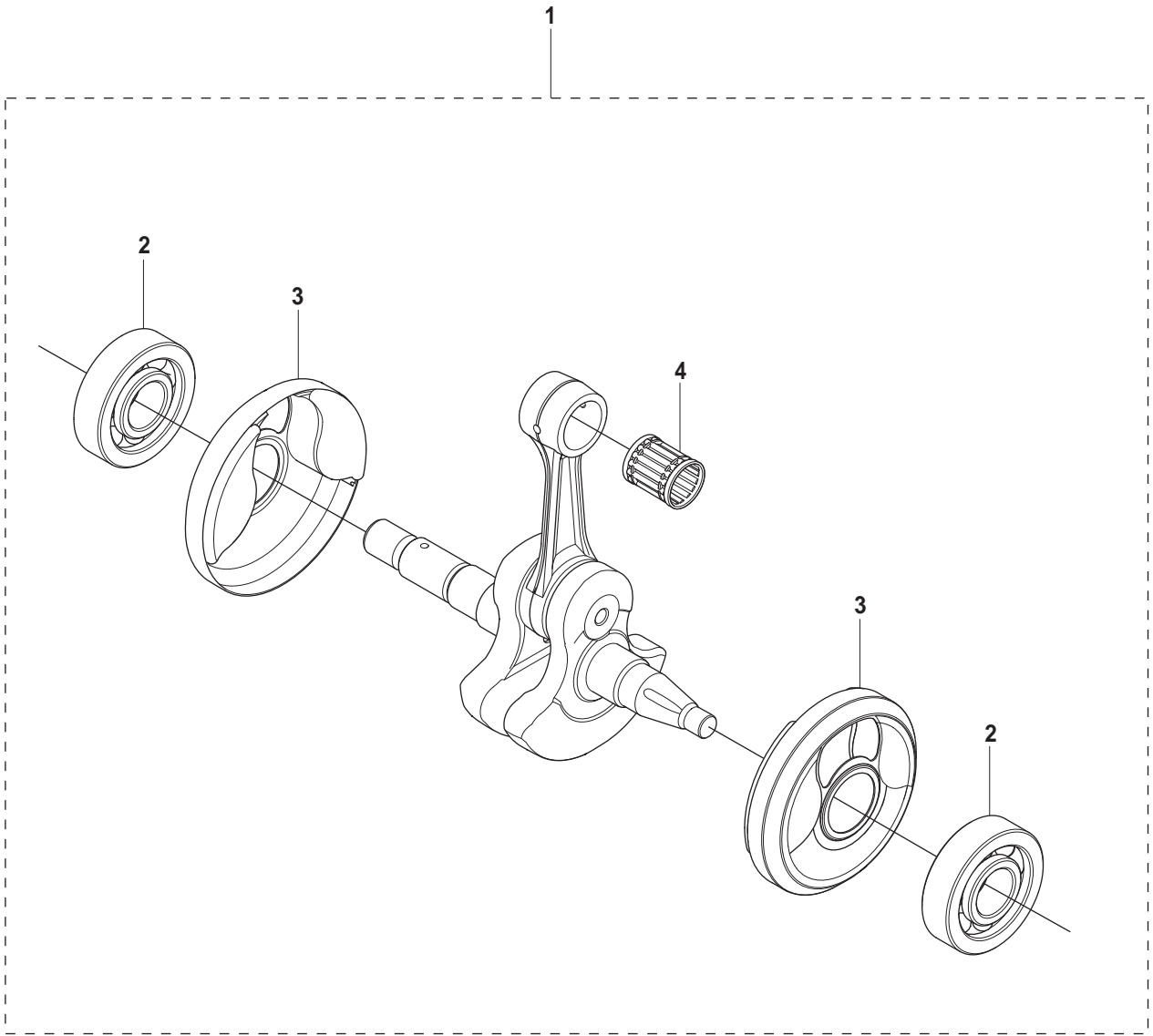
G K970 Ring



Page G
K970 Ring

Pos.	Part No.	Description	Quantity	Notes	New Part
1	544 21 84-01	SCREW	6		
2	544 93 56-03	CYLINDER ASSY	1	Incl. 9 - 10, 13	
3	544 21 52-01	HEAT DEFLECTOR	1		
4	506 37 81-01	GASKET MUFFLER	1		
5	506 37 28-01	MUFFLER	1		
6	503 21 53-25	SCREW	1		
7	503 23 04-02	WASHER	1		
8	503 66 56-01	DECOMPRESSION VALVE	1		
9	576 49 94-01	GASKET	1		
10	506 41 32-02	PISTON	1	Incl. 11 - 12	
11	503 28 90-35	PISTON RING	2		
12	737 44 13-00	CIRCLIP	2		
13	503 25 61-01	NEEDLE BEARING	1		
14	544 22 98-03	GASKET KIT	1	Incl. 4, 9, 15 - 16	
15	503 26 02-04	SEALING RING	2		
16	506 41 39-04	GASKET	1		

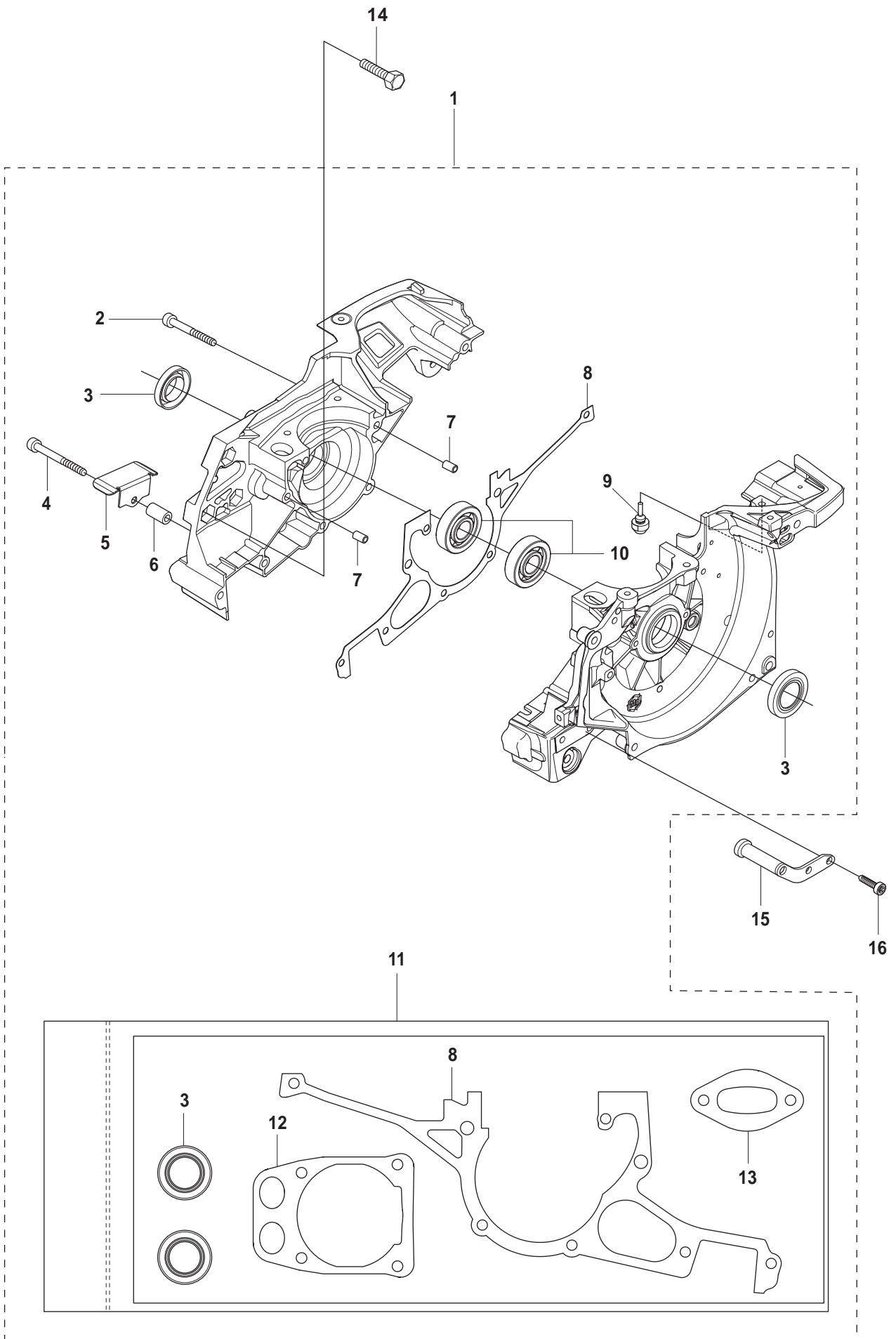
H K970 Ring



Page H
K970 Ring

Pos.	Part No.	Description	Quantity	Notes	New Part
1	574 26 76-01	CRANKSHAFT ASSY	1	Incl. 2 - 4	
2	503 25 00-02	BALL BEARING	2		
3	506 41 44-01	CUP	2		
4	503 25 61-01	NEEDLE BEARING	1		

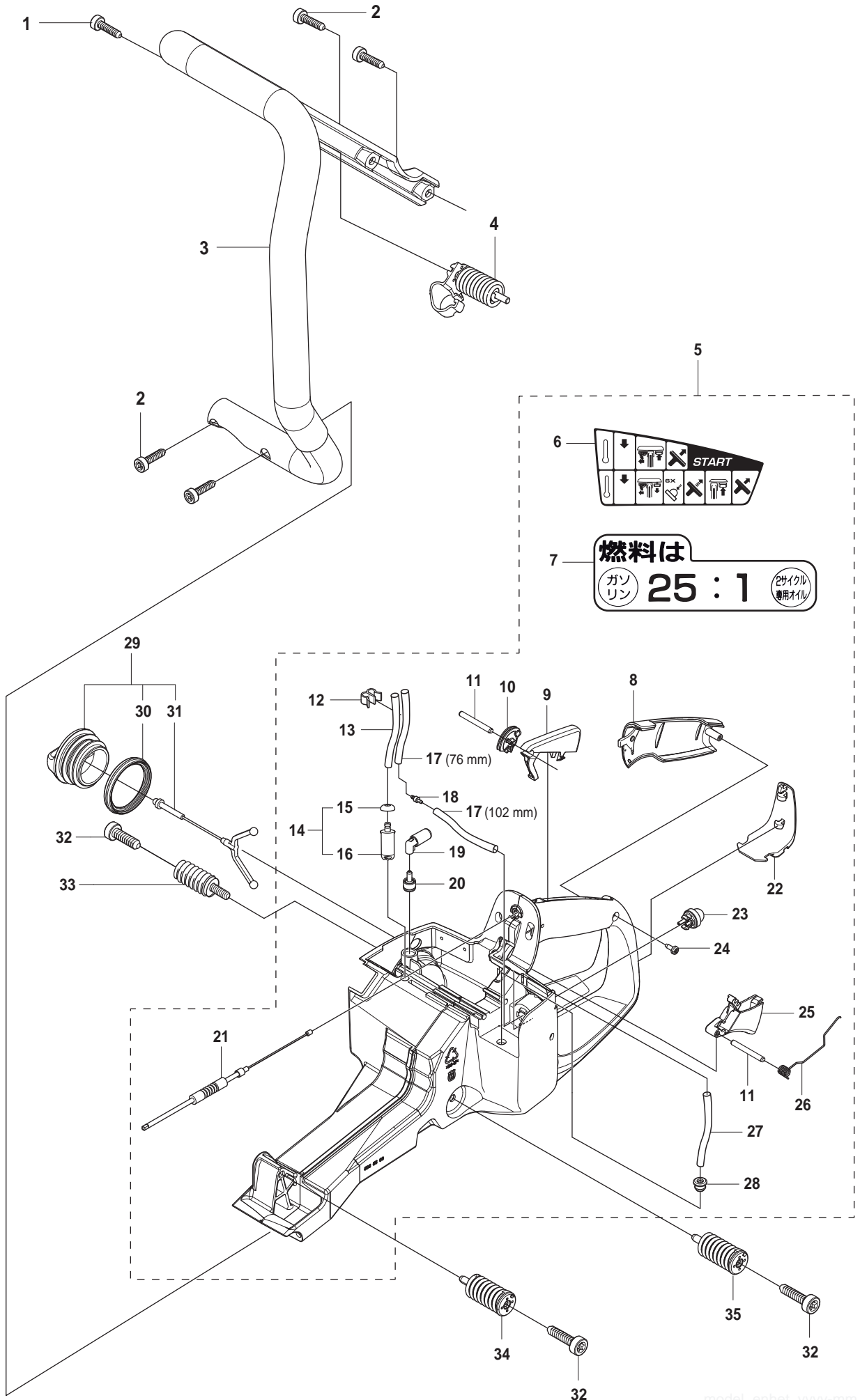
J K970 Ring



Page J
K970 Ring

Pos.	Part No.	Description	Quantity	Notes	New Part
1	576 88 12-01	CRANKCASE ASSY	1	Incl. 2 - 11	
2	503 21 53-49	SCREW	7		
3	503 26 02-04	SEALING RING	2		
4	503 21 53-56	SCREW	1		
5	544 09 64-01	BELT GUIDE	1		
6	544 09 77-01	BUSHING	1		
7	501 27 08-01	GUIDE BUSHING	2		
8	506 41 39-04	GASKET	1		
9	522 85 61-01	RUBBER BUSHING	1		
10	503 25 00-02	BALL BEARING	2		
11	544 22 98-03	GASKET KIT	1	Incl. 3, 8, 12 - 13	
12	576 49 94-01	GASKET	1		
13	506 37 81-01	GASKET MUFFLER	1		
14	506 03 32-02	SCREW	2		
15	506 34 91-01	BRACKET ASSY	1		
16	505 57 41-01	SCREW	2		

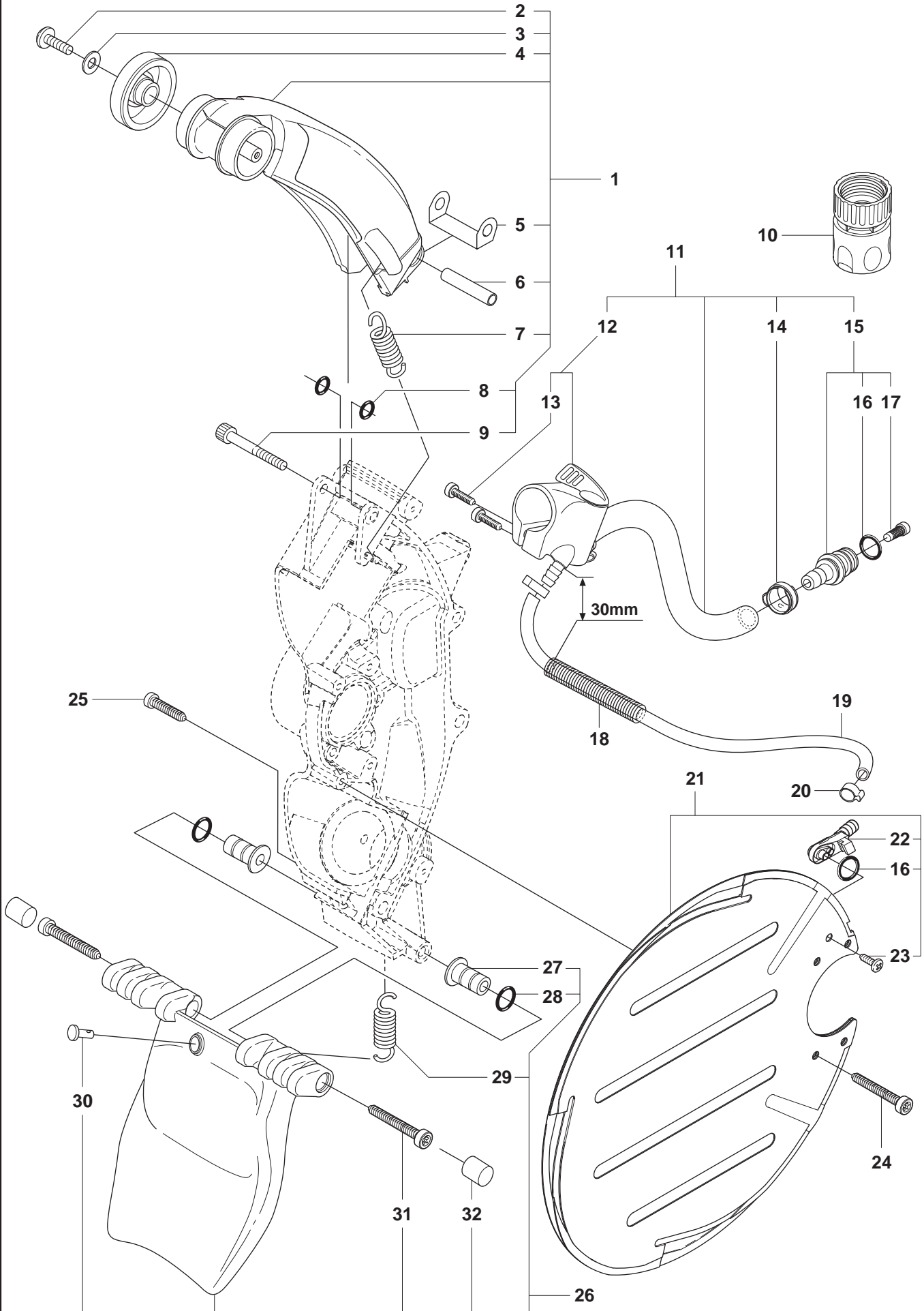
K K970 Ring



Page K
K970 Ring

Pos.	Part No.	Description	Quantity	Notes	New Part
1	544 06 12-01	SCREW	1		
2	503 21 54-20	SCREW	4		
3	523 02 75-01	HANDLE	1		
4	505 42 45-02	ANTIVIBRATION ELEMENT	1		
5	574 50 58-04	FUEL TANK ASSY	1	Incl. 6 - 28	
6	525 57 20-01	DECAL START INSTRUCTION	1		
7	506 31 30-01	LABLE	1		
8	537 20 56-01	COVER	1		
9	510 25 52-01	THROTTLE LOCK OUT	1		
10	537 20 85-01	CABLE LEVER	1		
11	720 12 40-20	PARALLEL PIN	2		
12	574 44 42-01	CLIPS	1		
13	544 32 50-02	FUEL HOSE	1	300 mm	
14	506 26 41-11	FUEL FILTER ASSY	1	Incl. 15 - 16	
15	506 27 11-01	HOSE CLAMP	1		
16	506 26 41-01	FUEL FILTER	1		
17	537 04 24-04	FUEL HOSE	1	190 mm	
18	575 52 65-01	CHECK VALVE	1		
19	522 79 96-01	HOLDER ASSY	1		
20	537 35 95-01	TANK VENT ASSY	1		
21	576 49 04-01	THROTTLE CABLE ASSY	1		
22	502 47 16-01	GROUND SUPPORT	1		
23	540 05 49-02	AIR PURGE	1		
24	503 21 28-10	SCREW	1		
25	502 47 18-01	THROTTLE CONTROL	1		
26	537 20 98-01	SPRING	1		
27	544 32 49-30	FUEL HOSE	1	70 mm	
28	503 73 58-01	BUSHING	1		
29	506 25 59-03	TANK CAP ASSY	1	Incl. 30 - 31	
30	506 29 21-01	GASKET	1		
31	503 57 89-01	HOLDER ASSY	1		
32	544 06 12-01	SCREW	3		
33	537 21 03-09	ANTIVIBRATION ELEMENT	1		
34	537 21 03-10	ANTIVIBRATION ELEMENT	1		
35	537 21 03-05	ANTIVIBRATION ELEMENT	1		

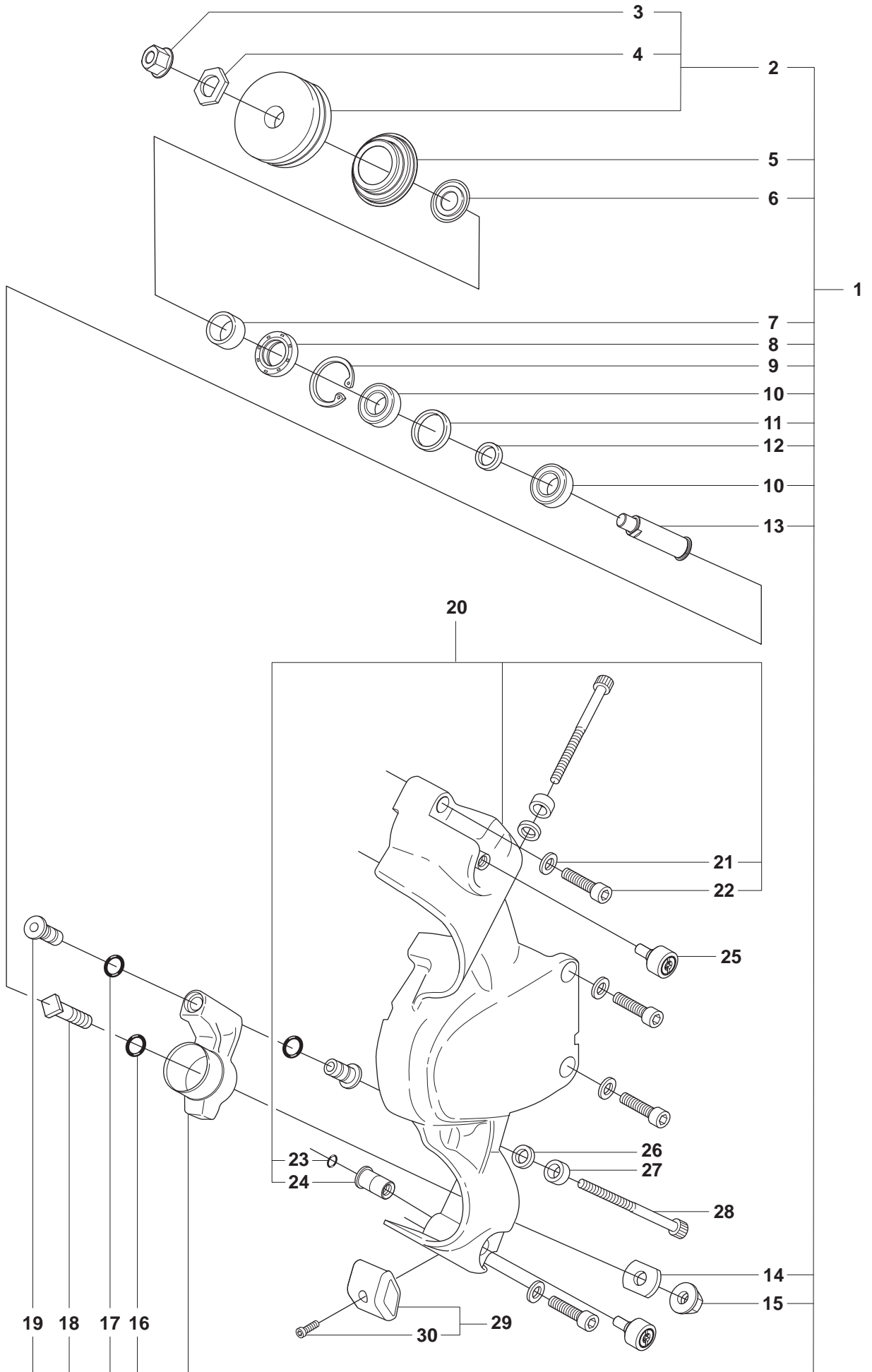
L K970 Ring



Page L
K970 Ring

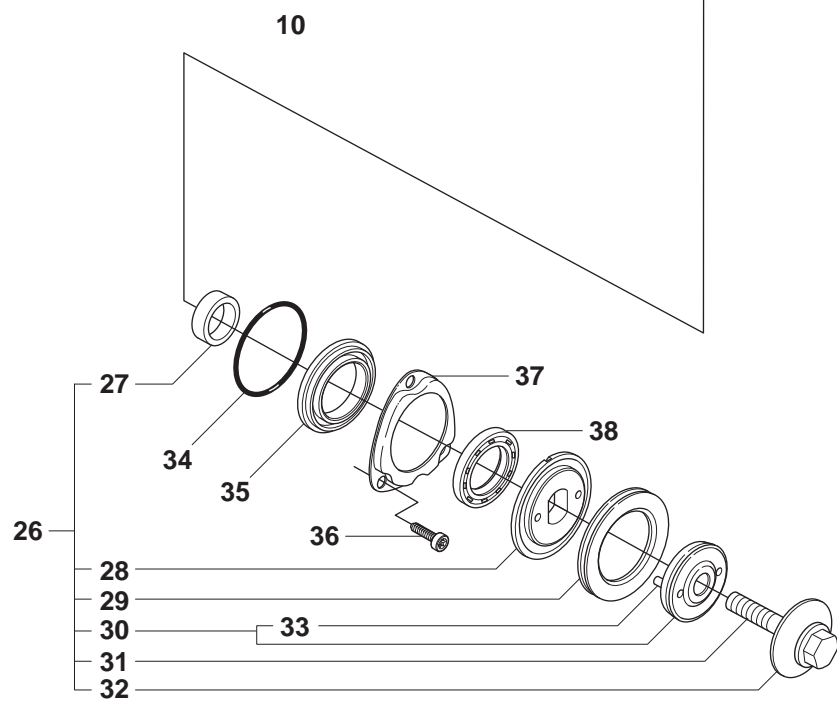
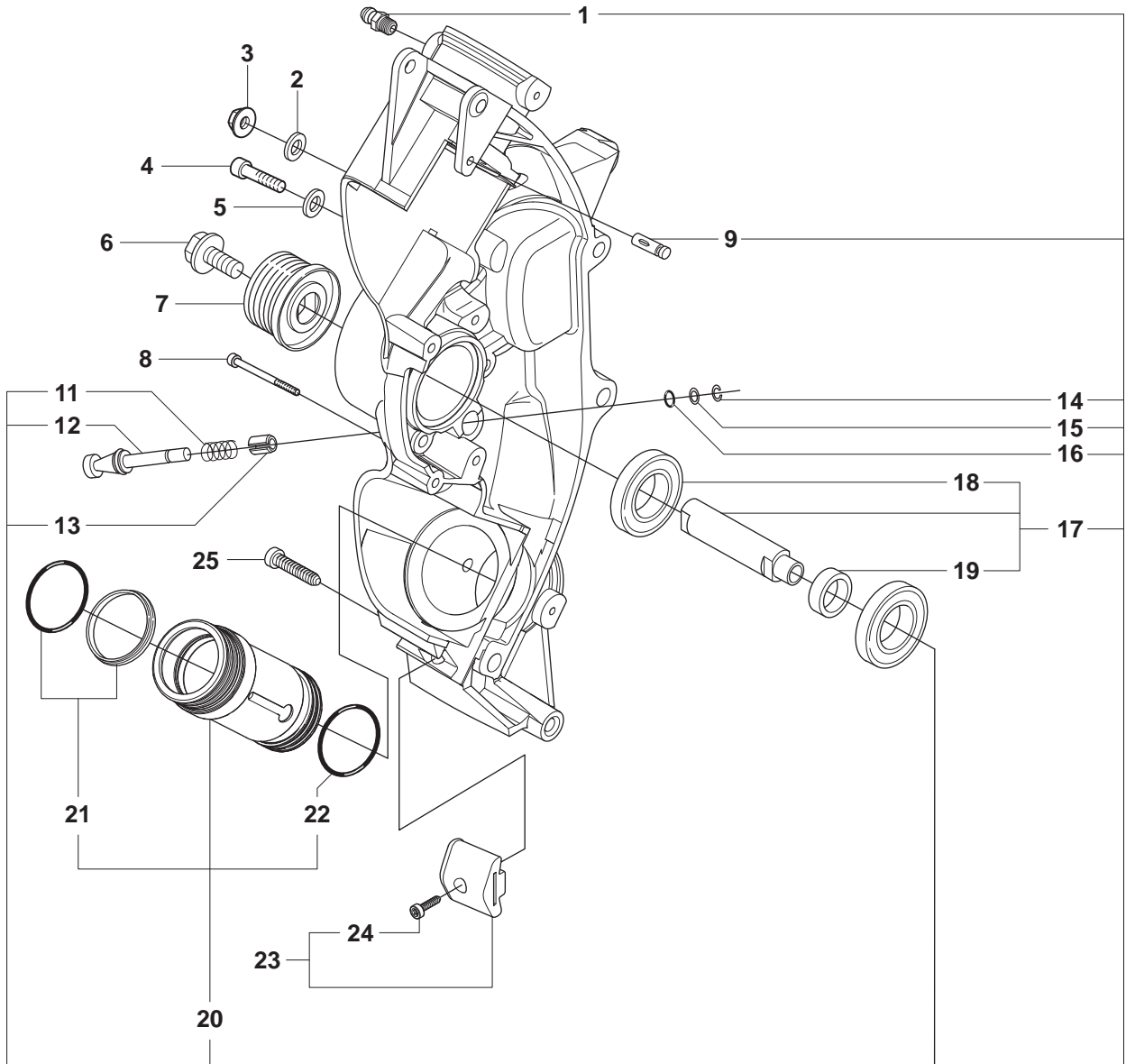
Pos.	Part No.	Description	Quantity	Notes	New Part
1	506 24 69-06	BLADE GUARD	1	Incl. 2 - 9	
2	503 21 46-01	SCREW	2		
3	734 48 80-01	WASHER	2		
4	506 26 22-02	WHEEL	2		
5	506 31 28-01	COVER PLATE	1		
6	506 31 45-01	SPACER TUBE	1		
7	504 11 67-01	SPRING	1		
8	503 26 30-25	O-RING	2		
9	544 21 84-47	SCREW	1		
10	503 26 60-03	COUPLER	1		
11	506 38 59-04	HOSE ASSY	1	Incl. 12, 14 - 15	
12	506 38 60-12	VALVE ASSY	1	Incl 13	
13	503 21 54-20	SCREW	2		
14	506 09 56-06	HOSE CLAMP	2		
15	506 29 57-02	NIPPLE	1	Incl. 16, 17	
16	503 26 30-21	O-RING	2		
17	506 29 88-01	FILTER	1		
18	506 35 27-01	PROTECTIVE SPRING	1		
19	506 09 58-12	HOSE	1	210 mm	
20	506 09 56-03	HOSE CLAMP	2		
21	506 38 33-01	WATER BLADE	1	Incl. 16, 22, 23	
22	506 38 29-01	NIPPLE	1		
23	729 52 89-71	SCREW	1		
24	505 57 41-01	SCREW	4		
25	503 21 53-20	SCREW	1		
26	506 35 22-05	SPRAY GUARD ASSY	1	Incl. 27 - 32	
27	506 33 49-02	SPACER TUBE	2		
28	740 42 05-00	O-RING	2		
29	506 33 95-01	DRAW SPRING	1		
30	506 33 96-01	BOLT	1		
31	544 21 84-37	SCREW	2		
32	506 34 90-01	SEALING	2		

M K970 Ring



Page M
K970 Ring

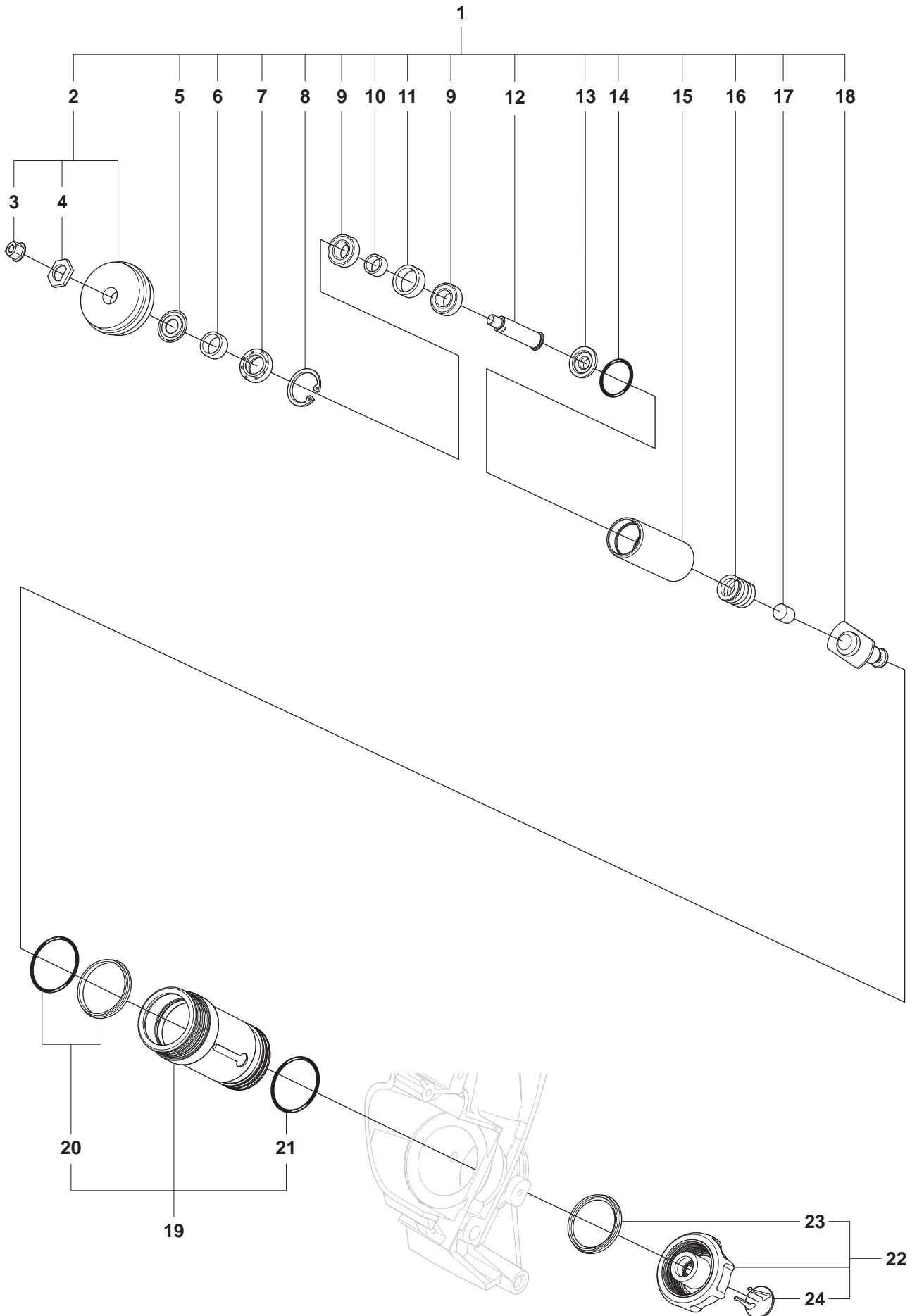
Pos.	Part No.	Description	Quantity	Notes	New Part
1	506 35 18-07	LEVER ASSY	2	Incl. 2, 5 - 18	
2	506 35 21-03	SUPPORT ROLLER	1	Incl. 3, 4	
3	503 22 04-01	NUT FLANGE	1	Fine thread	
4	506 30 34-01	DRIVER	1		
5	506 39 95-01	SEALING	1		
6	506 32 17-01	WASHER	1		
7	506 37 93-02	SPACING SLEEVE	1		
8	503 26 20-01	SEALING RING	1		
9	735 31 28-10	CIRCLIP	1		
10	503 25 24-01	BALL BEARING	2		
11	506 31 68-02	SPACING SLEEVE	1		
12	506 30 33-02	SPACING SLEEVE	1		
13	506 49 32-02	SHAFT	1		
14	506 34 63-01	WASHER	1		
15	503 22 00-01	NUT	1		
16	503 26 30-08	O-RING	1		
17	503 26 30-26	O-RING	2		
18	506 34 64-01	SCREW	1		
19	506 33 49-03	SPACER TUBE	2		
20	506 49 33-03	COVER	1	Incl. 21 - 24	
21	503 23 04-03	WASHER	4		
22	503 20 54-35	SCREW	4		
23	740 42 04-00	O-RING	2		
24	506 33 08-01	THREAD BUSHING	2		
25	505 57 49-01	ADJUSTING SCREW	2		
26	506 37 63-01	SPACER	2		
27	506 37 64-01	RUBBER BUSHING	2		
28	725 53 81-56	SCREW	2		
29	506 35 19-03	WEAR PROTECTION	1	Incl. 29	
30	505 57 41-01	SCREW	1		

N**K970 RING**

Page N
K970 Ring

Pos.	Part No.	Description	Quantity	Notes	New Part
1	738 88 10-01	LUBRICATION NIPPLE	2		
2	503 22 00-01	NUT FLANGE	2		
3	503 23 04-01	WASHER	2		
4	725 54 59-05	SCREW	1		
5	503 23 04-03	WASHER	1		
6	503 20 00-45	SCREW	1		
7	506 27 75-01	PULLEY	1		
8	501 98 10-80	SCREW	1		
9	721 12 52-70	PIN	1		
10	506 38 90-07	CHASSIS	1	Incl. 1, 9, 11 - 17, 20	
11	506 25 73-01	COMPRESSION SPRING	1		
12	506 32 80-01	LOCKING BUTTON	1		
13	721 44 06-00	PIN	1		
14	735 31 08-00	CIRCLIP	1		
15	503 23 01-12	WASHER STEEL	1		
16	503 26 30-22	O-RING	1		
17	506 35 15-02	DRIVE SHAFT	1	Incl. 18 - 19	
18	503 25 21-01	BALL BEARING	2		
19	506 37 50-02	SPACER	1		
20	544 07 76-01	SLEEVE	2	Incl. 21 - 22	
21	506 34 39-01	WIPER	2		
22	740 48 25-02	O-RING	2		
23	506 35 19-03	WEAR PROTECTION	1	Incl. 24	
24	505 57 41-01	SCREW	1		
25	503 21 53-20	SCREW	1		
26	506 35 23-04	GEAR WHEEL ASSY	1	Incl. 27 - 32	
27	506 37 49-01	SLEEVE	1		
28	506 37 46-02	FLANGE WASHER	1		
29	506 17 83-04	GEAR WHEEL	1		
30	506 31 22-02	DRIVER	1	Incl. 33	
31	506 13 96-01	COLLAR SCREW	1		
32	506 13 95-11	WASHER	1		
33	721 42 52-50	SPRING PIN	2		
34	740 42 24-00	O-RING	1		
35	506 37 48-01	SEALING HOLDER	1		
36	503 21 53-12	SCREW	3		
37	506 37 47-01	SEALING COLLAR	1		
38	503 26 21-01	SEALING RING	1		

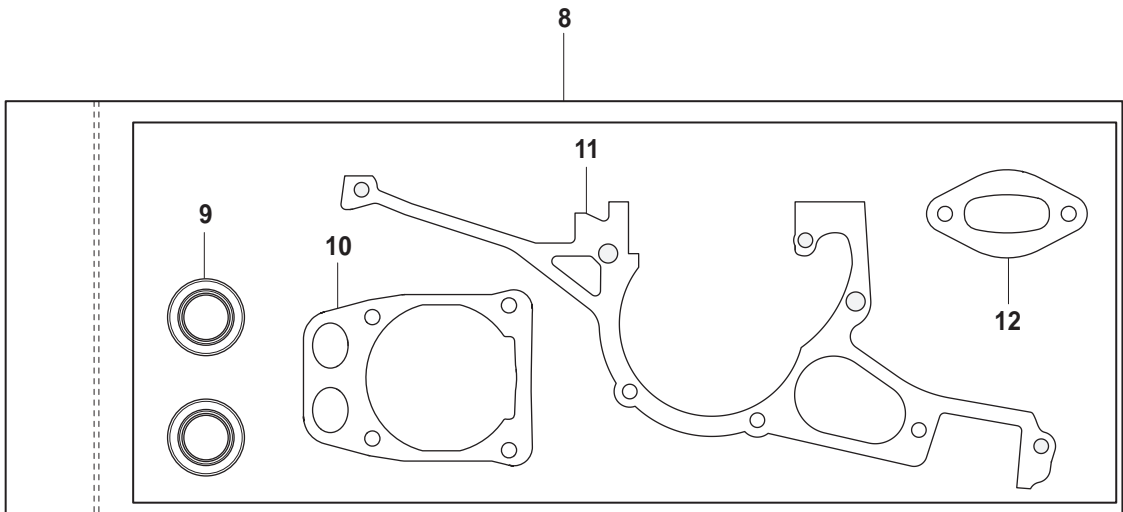
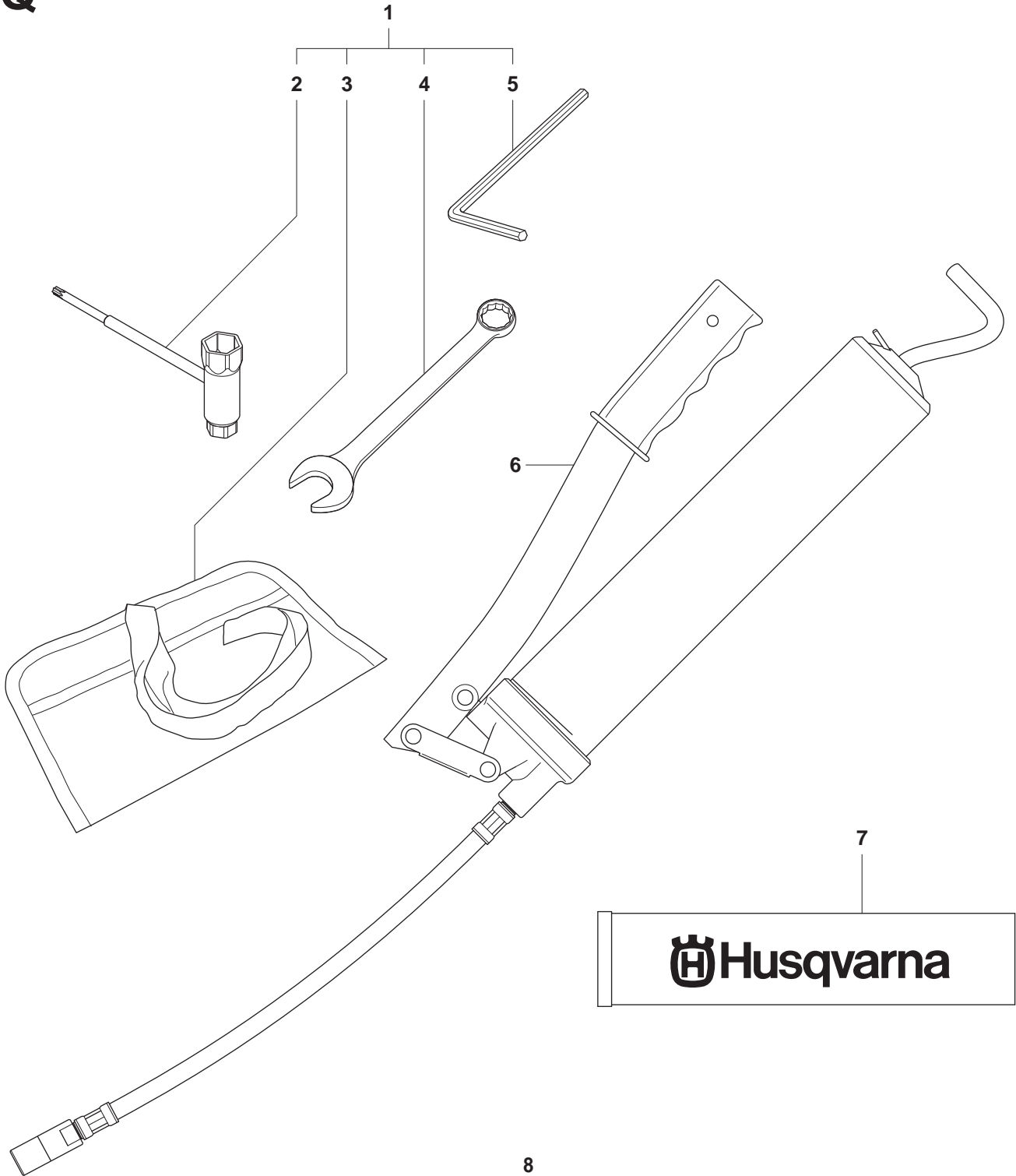
P K970 Ring



Page P
K970 Ring

Pos.	Part No.	Description	Quantity	Notes	New Part
1	506 49 34-01	BEARING CAGE	2	Incl. 2, 5 - 18	
2	506 35 20-05	GUIDE ROLLER	1	Incl. 3, 4	
3	503 22 04-01	NUT	1		
4	506 30 34-01	DRIVER	1		
5	506 31 69-01	DUST COVER	1		
6	506 37 93-02	SPACING SLEEVE	1		
7	503 26 20-01	SEALING RING	1		
8	735 31 28-10	CIRCLIP	1		
9	503 25 24-01	BALL BEARING	2		
10	506 30 33-01	SPACING SLEEVE	1		
11	506 31 68-01	SPACING SLEEVE	1		
12	506 49 32-01	SHAFT	1		
13	506 38 11-01	CAP	1		
14	740 48 20-12	RING	1		
15	506 38 09-01	BEARING CAGE	1		
16	506 34 76-01	COMPRESSION SPRING	1		
17	506 30 35-01	BUMPER	1		
18	506 38 97-01	PIN	1		
19	544 07 76-01	SLEEVE	2	Incl. 20, 21	
20	506 34 39-01	WIPER	1		
21	740 48 25-02	O-RING	1		
22	506 38 22-02	KNOB	1	Incl. 23	
23	506 33 65-01	SEALING RING	1		
24	506 38 21-02	CAP	1		

Q K970 Ring

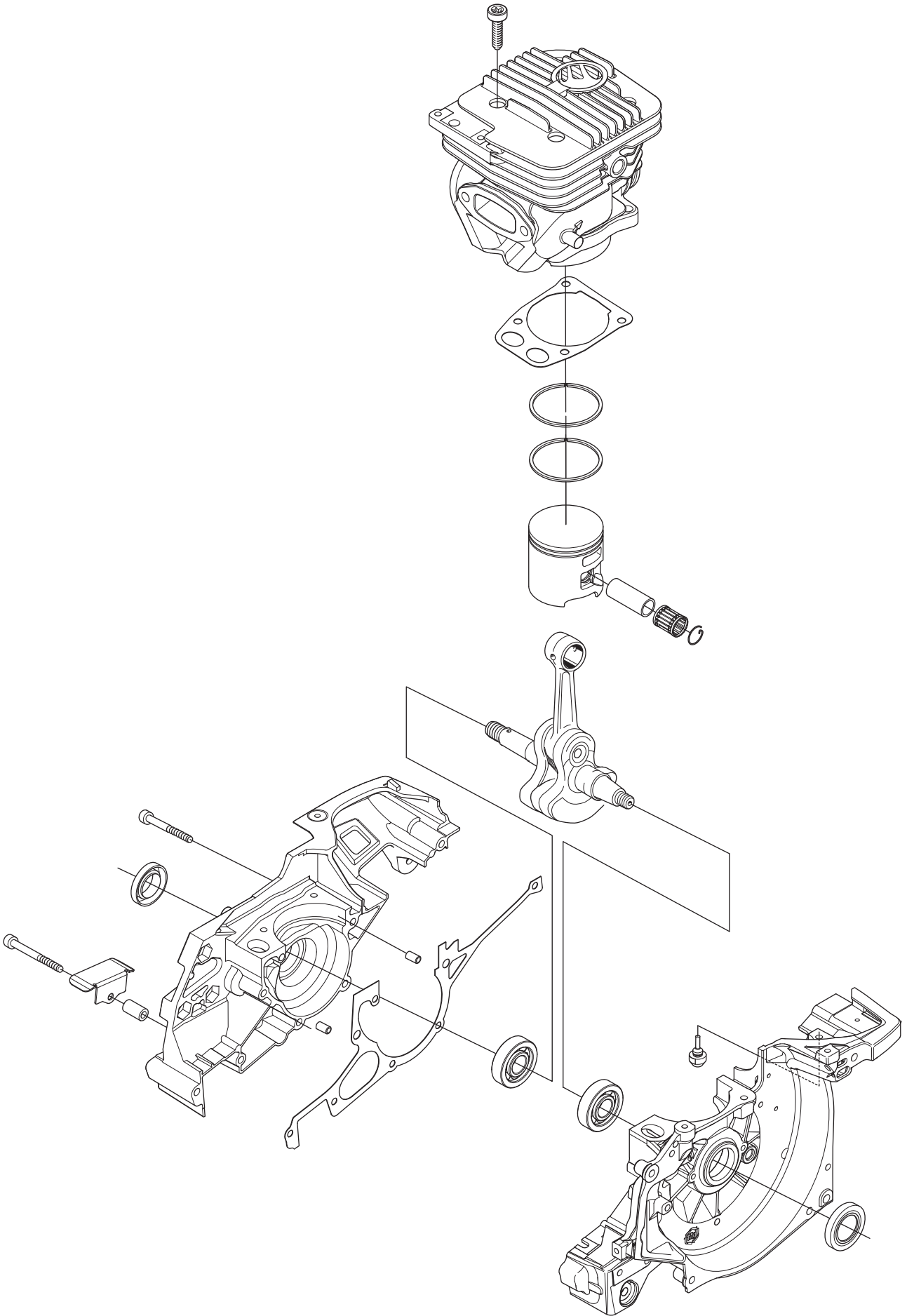


Page Q
K970 Ring

Pos.	Part No.	Description	Quantity	Notes	New Part
1	506 36 38-04	TOOL KIT	1	Incl. 2 - 5	
2	506 38 26-01	COMBINATION TOOL	1		
3	501 19 22-01	TOOL CASING	1		
4	506 35 52-01	TOOL	1	19mm	
5	506 36 36-01	L-SPANNER	1	Allenkey 6mm	
6	506 38 49-02	LUBRICATION GUN	1		
7	544 08 04-02	GREASE	1		
8	544 22 98-03	GASKET KIT	1	Incl. 9 - 12	
9	503 26 02-04	SEALING RING	2		
10	576 49 94-01	GASKET	1		
11	506 41 39-04	GASKET	1		
12	506 37 81-01	GASKET MUFFLER	1		

R K970 Ring

1



Page R
K970 Ring

Pos.	Part No.	Description	Quantity	Notes	New Part
1	576 88 12-02	LONG BLOCK	1		