



# BN Products - USA, LLC

3450 Sabin Brown Road • Wickenburg, Arizona 85390  
(800) 992-3833 • (928) 684-2813 • [www.bnproducts.com](http://www.bnproducts.com)

## DBD-16H PORTABLE MINI REBAR BENDER

*Tool Manual*  
*0-180 degree Rebar Bender*



The **DBD-16H** is a small lightweight portable rebar bender that can save valuable time. The angle adjustment lever allows you to bend rebar up to and including #5 (5/8") grade 60 rebar. This is a strong electric/mechanical bender that can dial-up bends from 1-180°. You can use it at your job site or in your shop. The DBD-16H portable rebar bender comes complete with a removable extension table, a tool kit, and a standard foot pedal control switch for hands-free bending. BN Products-USA backs this tool with one-year parts and labor warranty.

**BN Products-USA backs this product  
with a one-year warranty.**



# BN Products - USA, LLC

3450 Sabin Brown Road • Wickenburg, Arizona 85390  
(800) 992-3833 • (928) 684-2813 • [www.bnproducts.com](http://www.bnproducts.com)

## READ ALL INSTRUCTIONS AND SAVE THEM FOR FUTURE REFERENCE

Thank you for purchasing the DBD-16H Mini Rebar Bender. Please read this instruction manual carefully before use, and use the product safely and correctly. Please. After reading, please keep it in a place where it can be seen at any time.

**NOTE: When using electric tools, basic safety precautions should always be followed to reduce the risk of electric shock and personal injury, including the followings items:**

1. Keep hands away. From all moving parts and rollers while operating.
2. Dress properly. Loose clothing or jewelry can get caught in moving parts. Wear sturdy boots with non-skid soles. Steel toed boots and safety glasses are recommended.
3. Keep children and bystanders away. Distractions can cause you to lose control.
4. Do not overreach. Keep proper footing and balance at all times. This enables better control of the power tool in unexpected situations.
5. Stay alert. Watch what you are doing and use common sense when operating a power tool. Do not use a power tool while you are tired or under the influence of drugs or alcohol. A moment of inattention while operating power tools may result in serious personal injury.
6. Do not exceed the maximum number of bars that can be bent at one time. Please refer to specifications.
7. When positioning the bar between rollers, make sure to lay it flat on the machine surface. Failure to do so may cause the rebar to fly out.
8. Do not expose tool to rain or use in damp locations.. Do not use tool in presence of flammable liquids or gases. Keep work area well lit. If the tool is used outdoors, keep it covered when not in use and protect it from rain or water.
9. Do not bend materials harder than "Grade 60 or 600N/mm<sup>2</sup>" as they will either crack and fly out or cause machine failure.
10. Disconnect tool from receptacle when not in use. Disconnect when servicing or changing rollers to prevent accidents.
11. Keep tool clean at all times for best and safest performance. Follow instructions for lubricating and changing parts. Keep hands dry and free of oil or grease. Inspect switches, tool cords periodically and have them repaired or replaced by an authorized service center if damaged. Check moving parts for alignment and binding as well as for breakage and improper mounting. Damaged parts should be repaired or replaced by an authorized service facility unless otherwise indicated in this instruction book.

## DBD-16H Portable Rebar Bender

1. Removable Table Top
2. Moving Bending Roller
3. Stationary Roller
4. Adjustable Stopper
5. Lifting Handle
6. Power Switch
7. Reverse Button
8. Angle selector
9. Foot Pedal Plug
10. Operation Button





# BN Products - USA, LLC

3450 Sabin Brown Road • Wickenburg, Arizona 85390  
(800) 992-3833 • (928) 684-2813 • [www.bnproducts.com](http://www.bnproducts.com)

| Specifications:           |   |
|---------------------------|---|
| Maximum Bending Diameter: | 5/8" (#5) Rebar (16mm) Grade 60                   |
| Bending Angle / Speed     | Up to 180 degrees / 6 seconds                     |
| Voltage/Amperage:         | 100V 50/60Hz / 11 amps / 1050 W                   |
| Tool Weight:              | 40 lbs (20 kg)                                    |
| Dimensions L x W x H:     | 12.5" (320 mm) x 13.75" (350 mm) x 9.65" (245 mm) |

**WARNING** - Incorrect use could result in death or serious injury to the user or others near by.

This product must not be used for purposes other than those described in this instruction manual. .

Keep your workbench and surrounding workplace clean and uncluttered..

Please use safety glasses, gloves and rubber-bottomed safety shoes.

Use this tool on a stable surface with a stable working posture your feet firmly planted and balanced.

This is an electric power tool so be extremely careful of electric shock. Remember that moisture reduces the insulation properties of the motor and may cause electric shock. Do not use in the rain, wet places, or situations where water and oil could easily enter inside the machine.

Please use a GFI power supply. Be sure the tool is grounded correctly.

Please work properly. Baggy clothes, jewelry such as necklaces, ties, open cuffs, could get caught in the rotating part of this machine.

Please be careful about ignition and explosion. Power tools emit rectified sparks during use and when the switch is opened and closed. Products emitting flammable fumes may be ignited or explode Never use it in locations where these dangers are present. Avoid using this tool in poorly ventilated places such as a closed area.

Do not mishandle the power cord. Do not carry the tool by the power cord, or pull the cord to disconnect it from the outlet. Be careful that the cord does not touch high-temperature heat, oil, chemicals, or sharp objects, etc.

Turn off the power tool and removing the plug from the power outlet in the following cases;  
when inspection, maintenance, repair are necessary and when the tool is not in use

Before inserting the plug into the power outlet, make sure that the switch is turned off.

Before use, carefully inspect the cord and protective parts for damage, and make sure that it performs the desired function. Overheating can cause a malfunction.

Please use specified genuine parts when repairing this tool.

If you feel any abnormality while using the product, stop using it immediately and perform inspection and repair.

Do not exceed the maximum capacity

Handle power tools with care. If dropped or hit by mistake, the outer frame may be deformed or damaged, take the time to perform a thorough inspection before use.

Store power tools in places that are out of the reach of children. Storage areas should be locked and where temperature and humidity do not change suddenly. Storage areas should also be free from direct sunlight and rain, free from moisture, and dry.

Be careful of voltage drop when using extension cord.

This machine is a power tool intended for "bending work of reinforcing steel used for concrete reinforcement". Do not use it for any other purpose.

Do not exceed the maximum capacity of the machine See the specification chart.

When placing and using the product, use it on a level and stable surface.



# BN Products - USA, LLC

3450 Sabin Brown Road • Wickenburg, Arizona 85390  
(800) 992-3833 • (928) 684-2813 • [www.bnproducts.com](http://www.bnproducts.com)

Do not touch the rollers or moving parts, or bring your hands or face close to them during use.

Please wear safety glasses, and other appropriate apparel including gloves and rubber-bottomed safety shoes.

Do not leave this tool with the plug connected to the power supply when not in use.

Be sure to ground (earth) to prevent electric shock. To avoid electric shock, do not work with water or oil on your hands.

Do not leave this tool outdoors or use in the rain or snow.

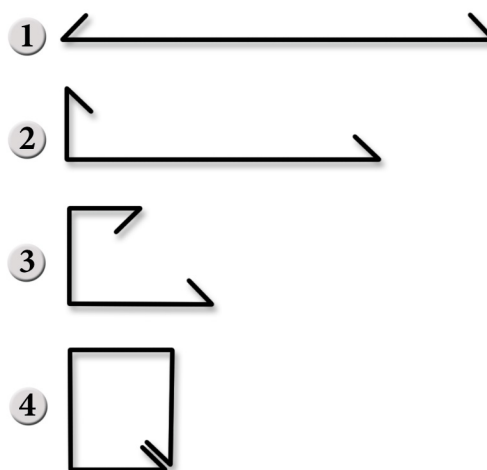
## WARNING: ALWAYS UNPLUG THIS TOOL BEFORE ATTACHING OR REMOVING ROLLERS OR ACCESSORIES.

1. Select and set the correct rollers for the bars to be bent. See the table above.
2. Plug the electrical power cord into an appropriate outlet.
3. Lay the bar on the machine surface between the center roller and bending roller. Adjust the stopper so that the bar is parallel to the front edge of the machine.
4. Turn the main switch on and check that the pilot lamp has lit up.
5. Set the angle and make a test bend. If the bent angle is not exact, adjust the angle setter slightly to the right or left. Lock in the angle stoppers to duplicate the same angle each time.
6. Push the operation button or foot switch. The moving bending roller will automatically return to the start position once the bend has been completed.
7. If it is necessary to stop the machine in an emergency, push the emergency stop button or release your foot from the foot operated switch. The bending roller will return to the start position automatically.

## BENDING ANGLES CAN BE PRESET

1. Set the angle setter to 135° then tighten the right angle stopper to lock the 135° position.
2. Set the angle setter to 90° then tighten the left angle stopper to lock the 90° position.
3. Set the angle setter to 135°. Push the operation button to make your first bend.
4. Slide the rebar to the desired length and set the angle setter to 90°. Push the operation button to complete your second bend.

For stirrups, cut your rebar to the desired length before bending. Then make both bends for your turndowns. Finally make your (3) 90° bends to connect your ends together. See below.



WARNING: Never touch any moving parts or rollers while the rebar bender is being operated.







# BN Products - USA, LLC

3450 Sabin Brown Road • Wickenburg, Arizona 85390  
(800) 992-3833 • (928) 684-2813 • [www.bnproducts.com](http://www.bnproducts.com)

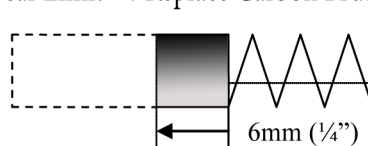
## INSPECTION AND MAINTENANCE

WARNING: ALWAYS UNPLUG TOOL BEFORE PERFORMING MAINTENANCE.  
DO NOT USE PARTS OR ACCESSORIES THAT ARE NOT  
GENUINE DIAMOND BRAND from BN Products-USA

1. At least once a month remove the bottom plate and grease all the visible gears and pinions. At the same time, check the carbon brushes for wear or damage. Replace with new brushes if they are worn out.

### 1C1961A Carbon Brush

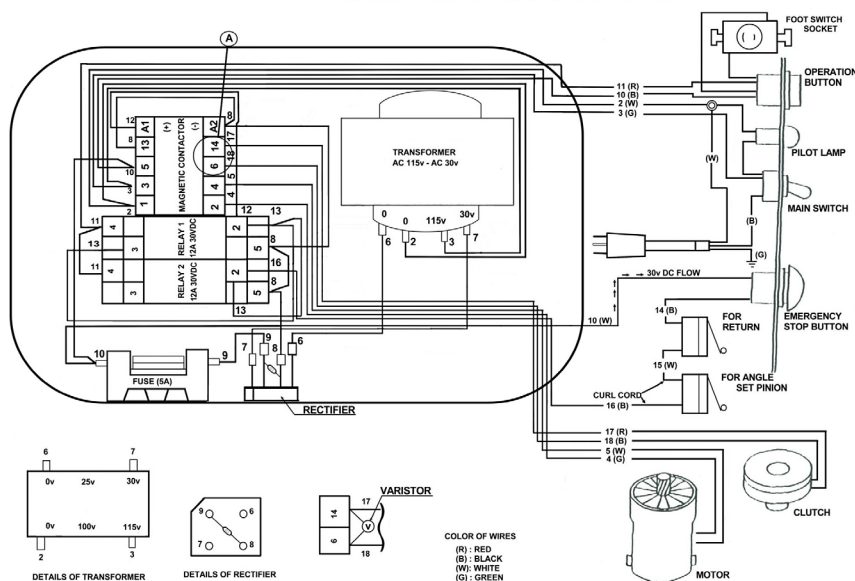
Wear Limit --> Replace Carbon Brushes



17mm (21/32") total length

2. Check that there are no loose nuts and bolts before starting the operation.
3. After operation is completed, be sure to remove metal dust, dirt, oil, etc... adhering to the machine surface.
4. In order to empty the metal dust from the bender, (remove side cover DBD-25X and DBD-32X models) then tilt the machine to one side allowing the debris to fall out of the catch pan. Be sure to blow out any remaining dirt and dust with compressed air prior to using the tool again (wear safety goggles to block blowing debris).

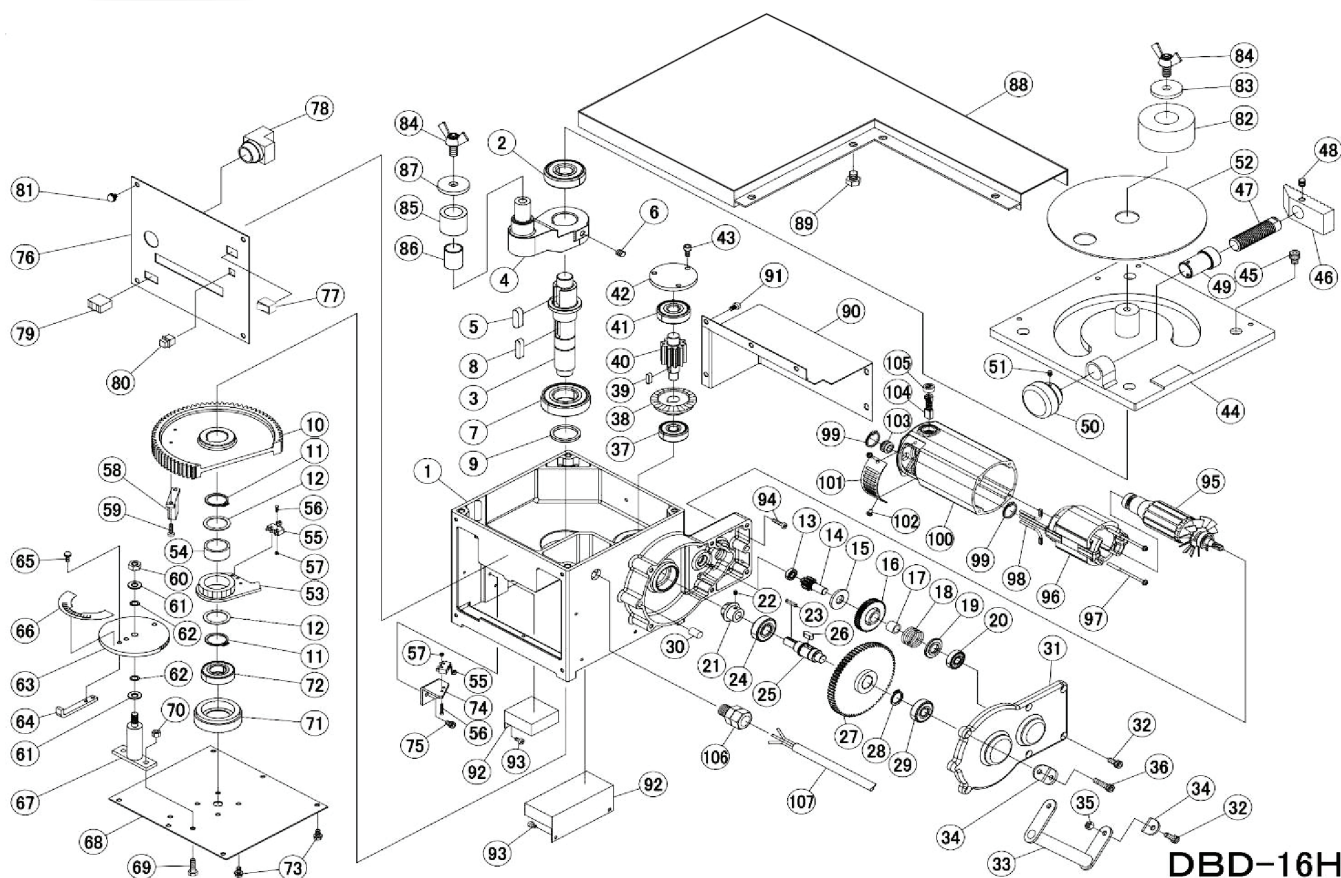
### WIRING FOR DBD-25X REBAR BENDER





# BN Products - USA, LLC

3450 Sabin Brown Road • Wickenburg, Arizona 85390  
(800) 992-3833 • (928) 684-2813 • [www.bnproducts.com](http://www.bnproducts.com)



**DBD-16H**

DBD-16H Parts List

| No. | Part No.     | Part Name       | Qty |
|-----|--------------|-----------------|-----|
| 1   | 1BDL1029100  | FRAME           | 1   |
| 2   | 76304ZZ      | BEARING 6304ZZ  | 1   |
| 3   | 1BDL3143200  | MAIN SHAFT      | 1   |
| 4   | 1BDL3143300  | SWIVEL ARM      | 1   |
| 5   | 7K100829.5R2 | KEY 10X8X29.5   | 1   |
| 6   | 7SS08008     | SET SCREW M8X8  | 1   |
| 7   | 76206LLU     | BEARING 6206LLU | 1   |
| 8   | 7K080729.5R2 | KEY 8X7X2935    | 1   |
| 9   | 1BDL400131   | COLLAR          | 1   |
| 10  | 1BDL3143400  | SWIVEL GEAR     | 1   |
| 11  | 7SRS026      | SNAP RING 26    | 2   |
| 12  | 7CIMRF34261  | SHIM            | 2   |
| 13  | 7W688ZZ      | BEARING W688ZZ  | 1   |
| 14  | 1BDL4277700  | PINION (1)      | 1   |
| 15  | 1BDL4277900  | CLUTCH PLATE    | 1   |

DBD-16H Parts List

| No. | Part No.      | Part Name         | Qty |
|-----|---------------|-------------------|-----|
| 16  | 1BDL4277800   | HELICAL GEAR      | 1   |
| 17  | 7HF1012       | ONE-WAY CLUTCH    | 1   |
| 18  | 1BDL4278100   | CLUTCH SPRING     | 1   |
| 19  | 1BDL4278000   | SPRING GUIDE      | 1   |
| 20  | 76000ZZ       | BEARING 6000ZZ    | 1   |
| 21  | 1BDL400230    | BEVEL GEAR        | 1   |
| 22  | 7SS04004      | STOP BOLT M4X4    | 1   |
| 23  | 7K0303018R2   | KEY 3X3X18        | 1   |
| 24  | 76202ZZ       | BEARING 6202ZZ    | 1   |
| 25  | 1BDL4278200   | SHAFT             | 1   |
| 26  | 7K0606014.5R2 | KEY 6X6X14.5      | 1   |
| 27  | 1BDL4278300   | GEAR (2)          | 1   |
| 28  | 7SRS018       | SNAP RING 18      | 1   |
| 29  | 76201ZZ       | BEARING 6201ZZ    | 1   |
| 30  | 7PP08015A     | PARALLEL PIN 8X15 | 2   |



# BN Products - USA, LLC

3450 Sabin Brown Road • Wickenburg, Arizona 85390  
(800) 992-3833 • (928) 684-2813 • [www.bnproducts.com](http://www.bnproducts.com)

| DBD-16H Parts List |             |                           |     |
|--------------------|-------------|---------------------------|-----|
| No.                | Part No.    | Part Name                 | Qty |
| 31                 | 1BDL3143500 | GEAR CASE COVER           | 1   |
| 32                 | 7CB06014    | CAP BOLT M6X14            | 6   |
| 33                 | 1BDL400850  | HANDLE                    | 1   |
| 34                 | 1BDL400840  | HANDLE BRACKET            | 2   |
| 35                 | 7NU006      | U NUT 6                   | 2   |
| 36                 | 7CB06025    | CAP BOLT M6X25            | 2   |
| 37                 | 76301ZZ     | BEARING 6301ZZ            | 1   |
| 38                 | 1BDL400200  | BEVEL GEAR                | 1   |
| 39                 | 7K0505016R2 | KEY 5X5X16                | 1   |
| 40                 | 1BDL4278400 | PINION (2)                | 1   |
| 41                 | 76302Z      | BEARING 6302ZZ            | 1   |
| 42                 | 1BDL400210  | BEARING COVER             | 1   |
| 43                 | 7CB05015    | CAP BOLT 5X15             | 3   |
| 44                 | 1BDL1029200 | SWIVEL PLATE              | 1   |
| 45                 | 7CB08015    | CAP BOLT M8X15            | 4   |
| 46                 | 1BDL4278800 | ADJUSTABLE STOPPER        | 1   |
| 47                 | 1BDL4278900 | ADJUSTABLE BOLT           | 1   |
| 48                 | 7SS08008    | STOP BOLT M8X8            | 1   |
| 49                 | 1BDL4279000 | ADJUSTABLE NUT            | 1   |
| 50                 | 1BDL4279100 | ADJUSTABLE HANDLE         | 1   |
| 51                 | 7SH05006    | STOP BOLT M5X6            | 2   |
| 52                 | 1BDL4279200 | CENTER PLATE              | 1   |
| 53                 | 1BDL300151  | ANGLE SET PINION          | 1   |
| 54                 | 1BDL400160  | BUSHING                   | 1   |
| 55                 | 7SS5GL2     | LIMIT SWITCH              | 2   |
| 56                 | 7P22.3015   | SCREW WITH WASHER M2.3X15 | 4   |
| 57                 | 7N002.3     | HEX NUT M2.3              | 4   |
| 58                 | 1BDL4278500 | DOCK                      | 1   |
| 59                 | 7P204016    | SCREW WITH WASHER M4X16   | 2   |
| 60                 | 7NN008      | N. NUT M8                 | 1   |
| 61                 | 7PW008      | PLAIN WASHER              | 2   |
| 62                 | 7WW008      | WAVE WASHER               | 2   |
| 63                 | 1BDL400181  | ANGLE GEAR                | 1   |
| 64                 | 1BDL4278700 | ANGLE LEVER               | 1   |

| DBD-16H Parts List |                 |                         |     |
|--------------------|-----------------|-------------------------|-----|
| No.                | Part No.        | Part Name               | Qty |
| 65                 | 7P205012        | SCREW WITH WASHER M5X12 | 2   |
| 66                 | 1BDL400411      | ANGLE SCALE             | 1   |
| 67                 | 1BDL4278600     | ANGLE SHAFT             | 1   |
| 68                 | 1BDL3143600     | BOTTOM PLATE            | 1   |
| 69                 | 7B206020        | HEX BOLT 6X20           | 2   |
| 70                 | 7N006           | HEX NUT M6              | 2   |
| 71                 | 1BDL401031      | BOTTOM BOSS             | 1   |
| 72                 | 76004ZZ         | BEARING 6004ZZ          | 1   |
| 73                 | 7USB205010      | UPSET BOLT M5X10        | 10  |
| 74                 | 1BDL4279301     | LS STAY                 | 1   |
| 75                 | 7CB205012       | CAP BOLT W/WASHER M5X12 | 2   |
| 76                 | 1BDL3143700     | CONTROL PANEL           | 1   |
| 77                 | 7CWSB-21NMKZMEF | LOCKER SWITCH           | 1   |
| 78                 | 7AR22F0R10G     | START SWITCH            | 1   |
| 79                 | 7ACT03FB03      | SOCKET FOR FOOT SWITCH  | 1   |
| 80                 | 7DS430R         | PUSH BUTTON SWITCH      | 1   |
| 81                 | 7P305008        | SCREW WITH WASHER M5X8  | 4   |
| 82                 | 1BDL4279400     | CENTER COLLAR           | 1   |
| 83                 | 1BL9402500      | WASHER                  | 1   |
| 84                 | 7WB10020        | WING BOLT M10X20        | 1   |
| 85                 | 1BDL400381      | BENDING ROLLER 16 φ34   | 1   |
| 86                 | 7BM2028FB       | BUSHING DUB 2028        | 1   |
| 87                 | 1BDL400390      | WASHER                  | 1   |
| 88                 | 1BDL2072200     | TABLE                   | 1   |
| 89                 | 7B08010         | HEX BOLT M8X10          | 4   |
| 90                 | 1BDL2072100     | MOTOR COVER             | 1   |
| 91                 | 7P305008        | SCREW WITH WASHER M5X8  | 6   |
| 92                 | 7UMCSW1         | CIRCUIT FOR MOTOR       | 1   |
| 93                 | 7P204006        | SCREW WITH WASHER M4X6  | 4   |





# BN Products - USA, LLC

3450 Sabin Brown Road • Wickenburg, Arizona 85390  
(800) 992-3833 • (928) 684-2813 • [www.bnproducts.com](http://www.bnproducts.com)

| DBD-16H Parts List |             |                          |     |
|--------------------|-------------|--------------------------|-----|
| No.                | Part No.    | Part Name                | Qty |
| 94                 | 7P204016    | SCREW WITH WASH-ER M4X16 | 4   |
| 95                 | 7M314619G02 | ROTAR 115V               | 1   |
| 96                 | 7M314620G02 | STATOR 115V              | 1   |
| 97                 | 7P204065    | SCREW WITH WASH-ER M4X65 | 2   |
| 98                 | 7M419574G01 | LEAD WIRE                | 1   |
| 100                | 7M210387H10 | FRAME (MOTOR HOUSING)    | 1   |

| DBD-16H Parts List |              |                         |     |
|--------------------|--------------|-------------------------|-----|
| No.                | Part No.     | Part Name               | Qty |
| 101                | 7P852647H01  | COVER                   | 1   |
| 102                | 7P204006     | SCREW WITH WASH-ER M4X6 | 2   |
| 103                | 7P443111H01  | RUBBER BUSHING          | 1   |
| 104                | 7M410728G01  | CARBON BRUSH            | 2   |
| 105                | 7P857640H01  | BRUSH CAP               | 2   |
| 106                | 7AG1610B     | CABLE GROUND            | 1   |
| 107                | 7HTK500399ZB | CORD 115V 2.6M          | 1   |

## More Tools

### PORTABLE #7 JOB SITE REBAR BENDER

*Capable of bending No. 7 (7/8") Grade 60 Rebar 180°*

It has a high-speed, automatic working cycle that is easy to operate and has two angle settings that can be preset making rebar stirrups easy. Weighs less than 200 lbs and can run off of a generator (12 amps). It includes a hands-free foot pedal control switch and a complete set of roller dies for making correct radius.



| Product No. | Description           |
|-------------|-----------------------|
| DBD-25X     | Portable Rebar Bender |



### THE CUTTING EDGE SAW™

*3/4" Rebar and 7/8" All-thread rod capacity, 9 amps*

- 3-position removable side handle and a rotating trigger handle
  - Double insulated power harness
  - ETL Certified and Listed
- Includes: 2 TCT cutting blades, extra set of motor carbon brushes, removable side handle, chip collector attachment, tool kit, and operations manual with a plastic molded carrying case.



| Product No. | Description       |
|-------------|-------------------|
| BNCE-20     | Cutting Edge Saw™ |



### THE CORDLESS CUTTING EDGE SAW™

*3/4" rebar and 7/8" all-thread rod capacity, 24V Li-Ion battery*

- Features a three position handle
- Comes with two (2) 24V batteries plus a quick-time AC charger unit
- We also include two specially designed cutting blades plus a chip collector bag and nifty carrying case



| Product No. | Description                |
|-------------|----------------------------|
| BNCE-20-24V | Cordless Cutting Edge Saw™ |



### THE TIGER TIER™ REBAR TYING MACHINE

*New generation Rebar Tier*

- Can tie two #6 (3/4") rebars in seconds
- Comes with two 18V Li-Ion power packs and a quick-time AC charger unit
- Light weight (5.8 lbs) with a glove-friendly grip and a one-year warranty
- Comes with a Nifty case that also contains four spools of wire ready to go



| Product No. | Description               |
|-------------|---------------------------|
| BNT-40X     | Portable Rebar Tying Tool |



### PORTABLE #5 HYDRAULIC REBAR CUTTER

*Easy to handle in-field portable rebar cutter.*

- Maximum cutting diameter is 5/8" rebar
- Cutting speed is less than 2.5 seconds with cutting pressure of 15 tons
- This is a hydraulic cutting shear
- The tool also has a safety relief valve and a cutting guard as standard feature



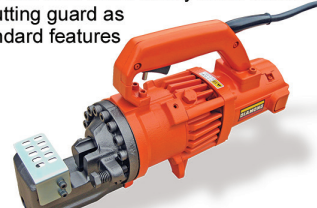
| Product No. | Description              |
|-------------|--------------------------|
| DC-16W      | Portable #5 Rebar Cutter |



### PORTABLE #6 HYDRAULIC REBAR CUTTER

*Largest selling in-field rebar cutter in the USA*

- Maximum cutting diameter is 3/4" rebar
- Cutting speed is less than 3 seconds with cutting pressure of 15 tons
- This is a hydraulic cutting shear
- The tool also has a safety relief valve and a cutting guard as standard features



| Product No. | Description              |
|-------------|--------------------------|
| DC-20WH     | Portable #6 Rebar Cutter |

