

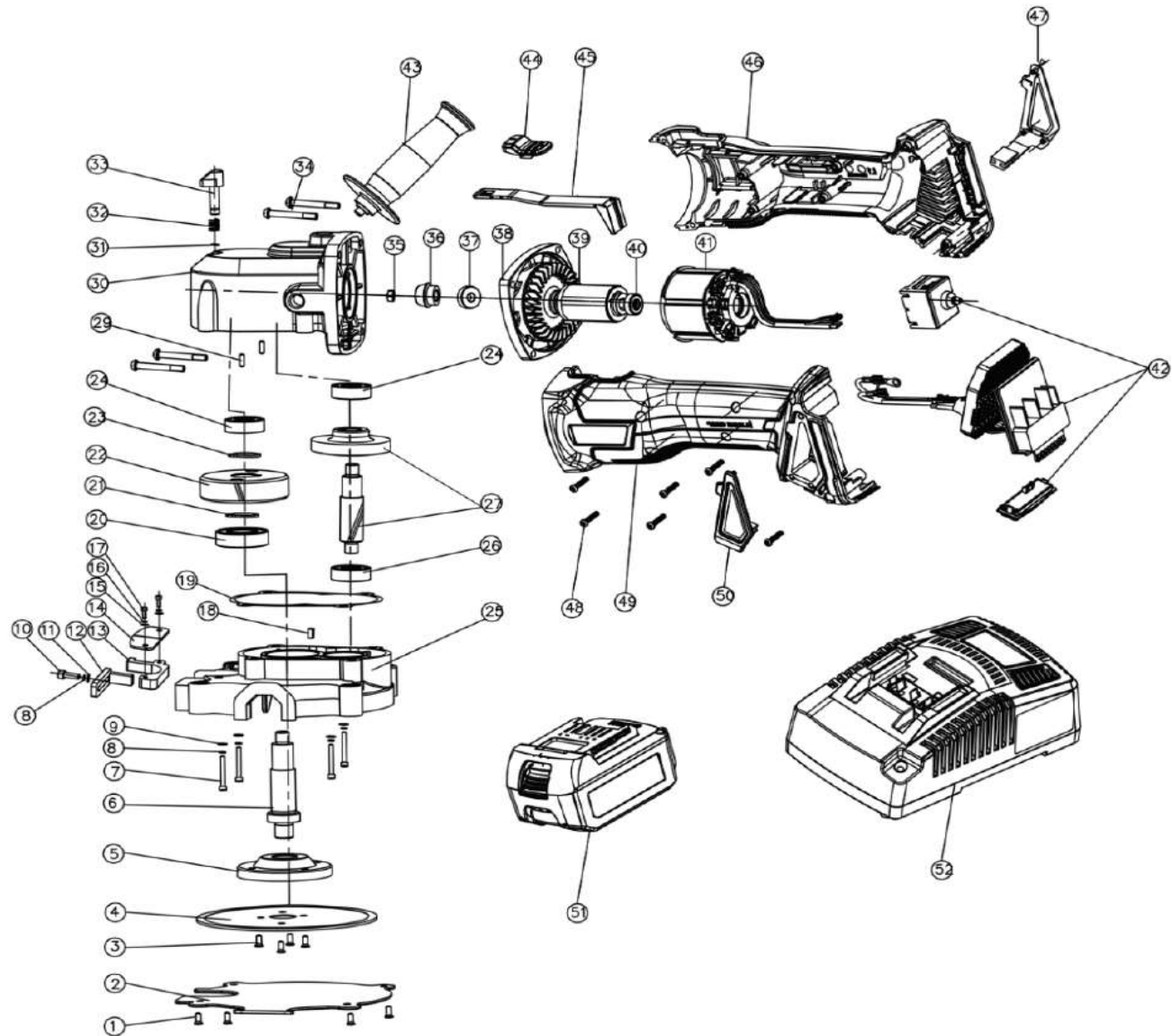
BNCE-20-24V Cutting Edge Saw™

Parts Guide

This Page -
Exploded View Drawing
Next Page -
Parts List
Customer Service Contact
Information



BNCE-20-24V Cutting Edge Saw



Parts List for BNCE-20-24V

No.	Description	Part Number	Qty	No.	Description	Part Number	Qty
1	Hexagon Socket Countersunk Head Bolt M5x14 (class 12.9)	BNCEP1-71	4	29	Pin-A5x16	BNCEP-29	1
2	Blade Cover	BNCEP1-72	1	30	Alumnum Gear Box Housing	BNCEP24V-30	1
3	Hexagon Socket Countersunk Head Bolt M5x8 (class 12.9)	BNCEP1-73	4	31	Steel Ring-5mm	BNCEP-31	1
4	Blade-New Style	RB-BNCE-KNH	1	32	Spring for Lock Button	BNCEP-32	1
5	Hub-New Style	w/ BNCEP1-75	1	33	Locking Button	BNCEP-33	1
6	Cutting Blade Spindle-New Style	BNCEP1-75	1	34	Six Flower Shaped Pan Head Tapping ScrewsT15	BNCEP24V-34	4
7	Hexagon Socket Head Cap Head Screw M5x30	BNCEP-07	4	35	Nut	BNCEP24V-35	1
8	Spring Lock Washer-5mm	BNCEP-08	5	36	Bevel Pinion	BNCEP24V-36	1
9	Plain Washer-5mm	BNCEP-09	4	37	Ball Bearing-608-2RS	BNCEP24V-37	1
10	Hexagon Socket Head Cap Head Screw M5x16	BNCEP-20	1	38	Diaphragm	BNCEP24V-38	1
11	Big Plain Washer-5mm	BNCEP-66	1	39	Rotor	BNCEP24V-39	1
12	Movable Cutting Guide Bolck	BNCEP-18	1	40	Ball Bearing-696-2RS	BNCEP24V-40	1
13	Fixed Cutting Guide Block	BNCEP-17	1	41	Stator	BNCEP24V-41	1
14	Left and Right Rubber Plate	BNCEP-21	1	42	Switch Assembly	BNCEP24V-42	1
15	Big Plain Washer-4mm	BNCEP-22	2	43	Side Handle	BNCEP-67	1
16	Spring Lock Washer-4mm	BNCEP-23	2	44	Switch Button	BNCEP24V-44	1
17	Hexagon Socket Head Cap Head Screw M4x16	BNCEP-24	2	45	Pole Switch	BNCEP24V-45	1
18	Flat Key-5x5x14	BNCEP-78	1	46	Right Housing	BNCEP24V-46	1
19	Gasket Seal	BNCEP-12	1	47	Dust Protection-Right	BNCEP24V-47	1
20	Ball Bearing-6002-2RS	BNCEP-25	1	48	Six Flower Shaped Pan Head Tapping ScrewsT10	BNCEP24V-48	6
21	Spacer	BNCEP-26	1	49	Left Housing	BNCEP24V-49	1
22	Big Gear	BNCEP-27	1	50	Dust Protection-Left	BNCEP24V-50	1
23	Shaft Clip-15	BNCEP-28	1	51	Battery	BNCE-24VLI	2
24	Ball Bearing-608-2Z	BNCEP-24V-24	2	52	Charger	BNCE-24VCHGR	1
25	Alumnum Housing	BNCEP1-77	1	<p align="center">BN Products-USA™ 3450 Sabin Brown Road Wickenburg, AZ 85390 Customer Service: (800) 992-3833 mail@bnproducts.com www.bnproducts.com</p>			
26	Ball Bearing-628-2Z	BNCEP24V-26	1				
27	Big Bevel Gear Assembly	BNCEP24V-27/28	1				