



Benner-Nawman, Inc.

3450 Sabin Brown Road • Wickenburg, AZ 85390

(800) 992-3833 • (928) 684-2813 • mail@bnproducts.com



Score Big with 14184W-UL Home-Run Distribution Panel

By Matt Smith

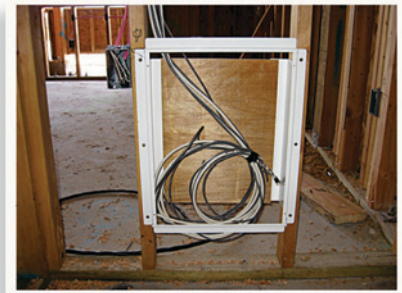
Do you wish there was a less expensive way to house low-voltage hubs and modules? Most structured wiring panels on the market today have become too expensive and they are designed for mounting one specific brand of equipment. You are automatically locked into getting an enclosure that fits the product.

There is a better way . . .

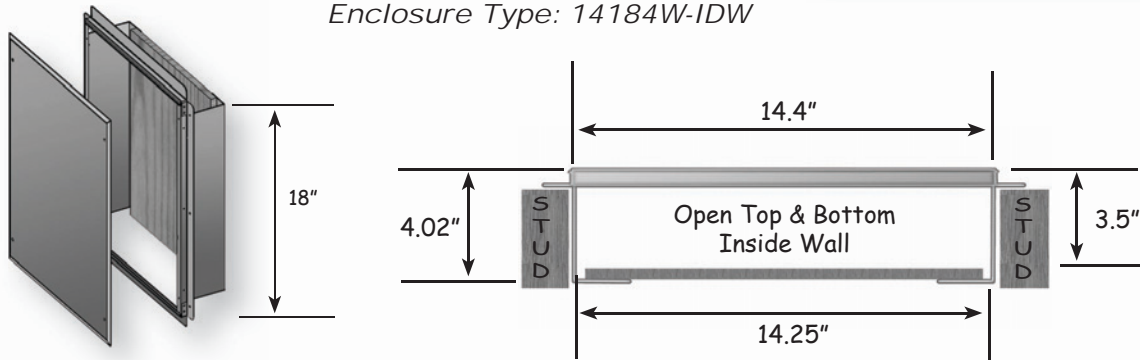
Benner-Nawman, Inc. pioneered low-voltage distribution enclosures. The 14184W-IDW with a wood backboard allows you to mount any type of hub distribution module used for home run interior locations. Because they are not product specific they cost less to manufacture and give the contractor the ability to mount any brand of equipment that is quickly available to get the job done.

Visiting a 23-building apartment project, the lead foreman explained, "Once we found the 14184W-IDW, using them was a no-brainer. They cost less, are easy to install and simple to mount equipment on the wood backboard... it was an easy decision to make. We saved about \$200.00 on each of the 23 buildings. You do the math."

Benner-Nawman enclosures can be ordered through most major electrical distributors. If you need assistance in finding one in your area please call: (800) 992-3833



Enclosure Type: 14184W-IDW



- Includes a 1/2" plywood backboard for easy mounting of utility/security/home theatre equipment
- The lid is fastened with 4 zinc-coated Phillips head sheet metal screws
- Made of 20-gauge galvaneal steel with a powder coat white finish
- Enclosure mounts prior to drywall between 16" center studs
- Lid comes blank w/ powder coat white finish
- Open top and bottom to the inside wall
- UL-Listed (UL1863)
- Box weight: 10 lbs.

